

Psychosocial factors of vaccine confidence: an exploratory study among Portuguese healthcare workers

Vânia Gaio^{1,2,3}, Ana Leonor Saraiva¹, Ana João Santos⁴, Ana Palmira Amaral⁵, Ausenda Machado^{1,2,3}

¹Department of Epidemiology, National Institute of Health Doutor Ricardo Jorge (INSA), Lisbon, Portugal, ²Public Health Research Center, National School of Public Health, NOVA University of Lisbon, Lisbon, Portugal. ³Comprehensive Health Research Center, NOVA University of Lisbon, Lisbon, Portugal. ⁴CINTESIS@RISE, Dep. Education and Psychology, University of Aveiro, Aveiro, Portugal ⁵Serviço de Saúde Ocupacional, Unidade Local de Saúde Viseu Dão-Lafões, Viseu, Portugal

Background: Healthcare workers (HCWs) play a critical role in vaccination uptake - personal adherence and promoting patient immunization.

Aim: to assess psychosocial factors affecting vaccine confidence among HCWs

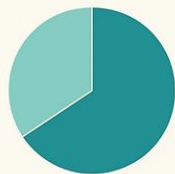
Methods:

- **Cross-sectional study** (October-November 2024) among doctors and nurses from a Portuguese healthcare unit.
- **Online questionnaire:** 10 items adapted short version Pro-VC-Be scale
- **Descriptive statistics**, bivariate analyses (vaccinated vs. non-vaccinated) using Fisher's exact and Pearson's Chi-squared tests

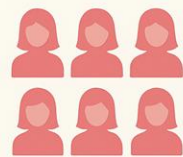
Conclusions

- ✓ **key psychosocial factors:** Trust in vaccine safety, belief in vaccine benefits and complacency
- ✓ Results should be interpreted with caution: **small sample size**
- ✓ **Replication in a larger and more diverse population** of HCWs is essential: development of targeted strategies focusing on building trust and combating misinformation to enhance vaccine uptake.

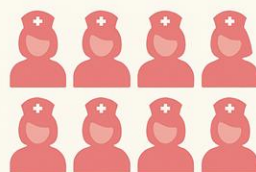
112
HCWs



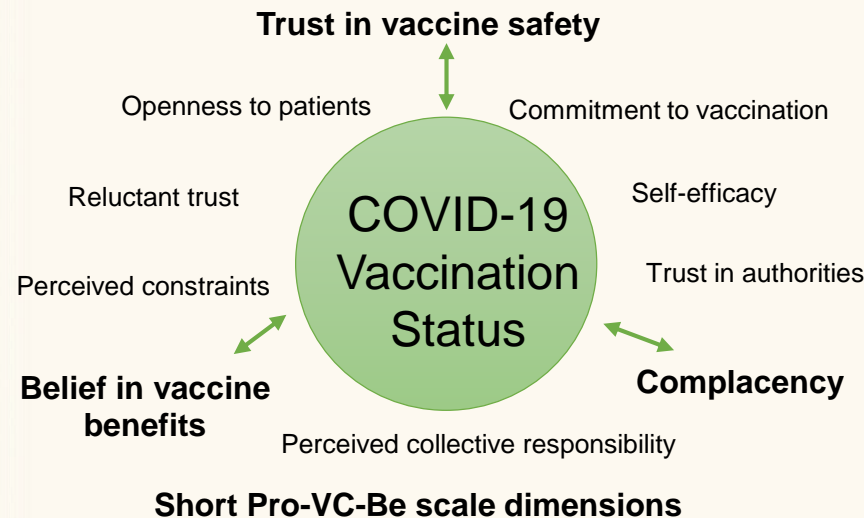
67% vaccinated
against COVID-19
in the 2024/25



82%
females



71%
nurses



Confidence scores by vaccination status

