

Published in final edited form as:

*Lancet.* 2024 November ; 404(10467): 2077–2093. doi:10.1016/S0140-6736(24)02317-1.

## Worldwide trends in diabetes prevalence and treatment from 1990 to 2022: a pooled analysis of 1108 population-representative studies with 141 million participants

NCD Risk Factor Collaboration (NCD-RisC)

Bin Zhou\* [Pooled Analysis and Writing],

Archie W Rayner\* [Pooled Analysis and Writing],

Prof Edward W Gregg [Pooled Analysis and Writing],

Kate E Sheffer [Pooled Analysis and Writing],

Rodrigo M Carrillo-Larco [Pooled Analysis and Writing],

James E Bennett [Pooled Analysis and Writing],

Prof Jonathan E Shaw [Pooled Analysis and Writing],

Prof Christopher J Paciorek [Pooled Analysis and Writing],

Rosie K Singleton [Pooled Analysis and Writing],

Ana Barradas Pires [Pooled Analysis and Writing],

Gretchen A Stevens [Pooled Analysis and Writing],

Prof Goodarz Danaei [Pooled Analysis and Writing],

Victor PF Lhoste [Pooled Analysis and Writing],

Nowell H Phelps [Pooled Analysis and Writing],

---

This work is licensed under a [BY 4.0 International license](#).

Correspondence to: Prof Majid Ezzati, School of Public Health, Imperial College London, London W12 0BZ, UK

[majid.ezzati@imperial.ac.uk](mailto:majid.ezzati@imperial.ac.uk).

\*equal contribution; joint first authors)

(equal contribution; listed alphabetically)

### Contributors

Members of the country and regional data group collected and reanalysed data and checked pooled data for accuracy of information about their study and other studies in their country. AWR, BZ, KES, RKS, RMCL, RAH, GAS, VPFL, NHP, AFBP, LJ, YDDB, AG, and AM collated data from different studies. AWR, BZ, and RAH managed the database. BZ, AWR, JEB, and AM adapted the statistical model with input from CJP and ME. BZ and AWR analysed the data and prepared results. ME, BZ, and AWR wrote the first draft of the manuscript with input from other members of the pooled analysis and writing group. Members of the country and regional data group commented on the draft report. ME oversaw research. Members of the country and regional data group had access to and verified data from individual participating studies. AWR, BZ, and RAH had access to and verified the pooled data used in the analysis. The corresponding author had the final responsibility for the decision to submit for publication.

### Declaration of interests

JES reports consulting fees from GSK, AstraZeneca, Sanofi, Novo Nordisk, Eli Lilly, Roche, and Abbott; payments for lectures from AstraZeneca, Boehringer Ingelheim, Novo Nordisk, Roche, Zuellig Pharmaceutical, and Eli Lilly; and payments for programme committee from AstraZeneca, outside the submitted work. ANW reports an honorarium from Sanofi for serving as a panel member at an educational event on thyroid cancer; support from Novo Nordisk for attendance at a continuing medical education event, and from Fogarty International Centre, National Institutes of Health Emerging Global Leader Award; and membership for the Diabetes Guidelines Committee, the Global Endocrine Leadership Coalition, the Society for Endocrinology, Metabolism and Diabetes of South Africa, and Endocrine Society-Member for the Research Affairs Core Committee, outside the submitted work. CJP reports holding stocks in Pfizer, outside the submitted work. All other authors declare no competing interests.

See Online for appendix

For the NCD-RisC website see <https://www.ncdrisc.org>

Rachel A Heap [Pooled Analysis and Writing],  
Lakshya Jain [Pooled Analysis and Writing],  
Ysé d'Ailhaud de Brisis [Pooled Analysis and Writing],  
Agnese Galeazzi [Pooled Analysis and Writing],  
Prof Andre P Kengne [Pooled Analysis and Writing],  
Anu Mishra [Pooled Analysis and Writing],  
Nayu Ikeda [Pooled Analysis and Writing],  
Prof Hsien-Ho Lin [Pooled Analysis and Writing],  
Prof Carlos A Aguilar-Salinas [Pooled Analysis and Writing],  
Ranjit Mohan Anjana [Pooled Analysis and Writing],  
Prof Habiba Ben Romdhane [Pooled Analysis and Writing],  
Prof Kairat Davletov [Pooled Analysis and Writing],  
Shubash Ganapathy [Pooled Analysis and Writing],  
Christin Heidemann [Pooled Analysis and Writing],  
Prof Yousef Saleh Khader [Pooled Analysis and Writing],  
Prof Young-Ho Khang [Pooled Analysis and Writing],  
Prof Avula Laxmaiah [Pooled Analysis and Writing],  
Prof Jean Claude N Mbanya [Pooled Analysis and Writing],  
Viswanathan Mohan [Pooled Analysis and Writing],  
Prof KM Venkat Narayan [Pooled Analysis and Writing],  
Meda E Pavkov [Pooled Analysis and Writing],  
Prof Eugène Sobngwi [Pooled Analysis and Writing],  
Alisha N Wade [Pooled Analysis and Writing],  
Novie O Younger-Coleman [Pooled Analysis and Writing],  
Prof Tomasz Zdrojewski [Pooled Analysis and Writing],  
Prof Majid Ezzati [Pooled Analysis and Writing]  
Leandra Abarca-Gómez\* [Country and Regional Data],  
Mohsen Abbasi-Kangevari\* [Country and Regional Data],  
Hanan F Abdul Rahim\* [Country and Regional Data],  
Niveen M Abu-Rmeileh\* [Country and Regional Data],  
Shalkar Adambekov\* [Country and Regional Data],  
Robert J Adams\* [Country and Regional Data],  
Wichai Aekplakorn\* [Country and Regional Data],  
Shoaib Afzal\* [Country and Regional Data],  
Imelda A Agdeppa\* [Country and Regional Data],  
Javad Aghazadeh-Attari\* [Country and Regional Data],  
Carlos A Aguilar-Salinas\* [Country and Regional Data],  
Charles Agyemang\* [Country and Regional Data],  
Noor Ani Ahmad\* [Country and Regional Data],  
Ali Ahmadi\* [Country and Regional Data],

**Naser Ahmadi\* [Country and Regional Data],  
Nastaran Ahmadi\* [Country and Regional Data],  
Soheir H Ahmed\* [Country and Regional Data],  
Wolfgang Ahrens\* [Country and Regional Data],  
Kamel Ajlouni\* [Country and Regional Data],  
Sarah F Al-Hamli\* [Country and Regional Data],  
Halima Al-Hinai\* [Country and Regional Data],  
Jawad A Al-Lawati\* [Country and Regional Data],  
Deena Al Asfoor\* [Country and Regional Data],  
Monira Alarouj\* [Country and Regional Data],  
Fadia AlBuhairan\* [Country and Regional Data],  
Shahla AlDhukair\* [Country and Regional Data],  
Mohamed M Ali\* [Country and Regional Data],  
Mohammed K Ali\* [Country and Regional Data],  
Anna V Alieva\* [Country and Regional Data],  
Farbod Alinezhad\* [Country and Regional Data],  
Abdullah Alkandari\* [Country and Regional Data],  
Ala'a Alkerwi\* [Country and Regional Data],  
Eman Aly\* [Country and Regional Data],  
Deepak N Amarapurkar\* [Country and Regional Data],  
Lars Bo Andersen\* [Country and Regional Data],  
Sigmund A Anderssen\* [Country and Regional Data],  
Dolores S Andrade\* [Country and Regional Data],  
Ranjit Mohan Anjana\* [Country and Regional Data],  
Alireza Ansari-Moghaddam\* [Country and Regional Data],  
Hajer Aounallah-Skhiri\* [Country and Regional Data],  
Joana Araújo\* [Country and Regional Data],  
Tahir Aris\* [Country and Regional Data],  
Raphael E Arku\* [Country and Regional Data],  
Nimmathota Arlappa\* [Country and Regional Data],  
Krishna K Aryal\* [Country and Regional Data],  
Thor Aspelund\* [Country and Regional Data],  
Felix K Assah\* [Country and Regional Data],  
Batyrbek Assembekov\* [Country and Regional Data],  
Shiu Lun Au Yeung\* [Country and Regional Data],  
Juha Auvinen\* [Country and Regional Data],  
Mária Avdi ová\* [Country and Regional Data],  
Kishwar Azad\* [Country and Regional Data],  
Ana Azevedo\* [Country and Regional Data],**

Mohsen Azimi-Nezhad\* [Country and Regional Data],  
Fereidoun Azizi\* [Country and Regional Data],  
Flora Bacopoulou\* [Country and Regional Data],  
Nagalla Balakrishna\* [Country and Regional Data],  
Yulia Balanova\* [Country and Regional Data],  
Mohamed Bamoshmoosh\* [Country and Regional Data],  
Maciej Banach\* [Country and Regional Data],  
Piotr Bandosz\* [Country and Regional Data],  
José R Banegas\* [Country and Regional Data],  
Carlo M Barbagallo\* [Country and Regional Data],  
Alberto Barcelo\* [Country and Regional Data],  
Maja Bareti\* [Country and Regional Data],  
Lena Barrera\* [Country and Regional Data],  
Marta Barreto\* [Country and Regional Data],  
Abdul Basit\* [Country and Regional Data],  
Anwar M Batieha\* [Country and Regional Data],  
Aline P Batista\* [Country and Regional Data],  
Louise A Baur\* [Country and Regional Data],  
Antonisamy Belavendra\* [Country and Regional Data],  
Habiba Ben Romdhane\* [Country and Regional Data],  
Theodora Benedek\* [Country and Regional Data],  
Mikhail Benet\* [Country and Regional Data],  
Michaela Benzeval\* [Country and Regional Data],  
Salim Berkinbayev\* [Country and Regional Data],  
Antonio Bernabe-Ortiz\* [Country and Regional Data],  
Ximena Berrios Carrasola\* [Country and Regional Data],  
Heloísa Bettiol\* [Country and Regional Data],  
Augustin F Beybey\* [Country and Regional Data],  
Santosh K Bhargava\* [Country and Regional Data],  
Yufang Bi\* [Country and Regional Data],  
Elysée Claude Bika Lele\* [Country and Regional Data],  
Mukharram M Bikbov\* [Country and Regional Data],  
Bihungum Bista\* [Country and Regional Data],  
Peter Bjerregaard\* [Country and Regional Data],  
Espen Bjertness\* [Country and Regional Data],  
Marius B Bjertness\* [Country and Regional Data],  
Cecilia Björkelund\* [Country and Regional Data],  
Katia V Bloch\* [Country and Regional Data],  
Anneke Blokstra\* [Country and Regional Data],

**Martin Bobak\*** [Country and Regional Data],  
**Bernhard O Boehm\*** [Country and Regional Data],  
**Jose G Boggia\*** [Country and Regional Data],  
**Carlos P Boissonnet\*** [Country and Regional Data],  
**Stig E Bojesen\*** [Country and Regional Data],  
**Marialaura Bonaccio\*** [Country and Regional Data],  
**Alice Bonilla-Vargas\*** [Country and Regional Data],  
**Herman Borghs\*** [Country and Regional Data],  
**Steve Botomba\*** [Country and Regional Data],  
**Pascal Bovet\*** [Country and Regional Data],  
**Imperia Brajkovich\*** [Country and Regional Data],  
**Hermann Brenner\*** [Country and Regional Data],  
**Lizzy M Brewster\*** [Country and Regional Data],  
**Garry R Brian\*** [Country and Regional Data],  
**Yajaira Briceño\*** [Country and Regional Data],  
**Miguel Brito\*** [Country and Regional Data],  
**Gloria Bueno\*** [Country and Regional Data],  
**Anna Bugge\*** [Country and Regional Data],  
**Frank Buntinx\*** [Country and Regional Data],  
**Antonio Cabrera de León\*** [Country and Regional Data],  
**Roberta B Caixeta\*** [Country and Regional Data],  
**Günay Can\*** [Country and Regional Data],  
**Ana Paula C Cândido\*** [Country and Regional Data],  
**Mario V Capanzana\*** [Country and Regional Data],  
**Nad žda apková\*** [Country and Regional Data],  
**Eduardo Capuano\*** [Country and Regional Data],  
**Rocco Capuano\*** [Country and Regional Data],  
**Vincenzo Capuano\*** [Country and Regional Data],  
**Viviane C Cardoso\*** [Country and Regional Data],  
**Axel C Carlsson\*** [Country and Regional Data],  
**Rodrigo M Carrillo-Larco\*** [Country and Regional Data],  
**Felipe F Casanueva\*** [Country and Regional Data],  
**Laura Censi\*** [Country and Regional Data],  
**Marvin Cervantes–Loaiza\*** [Country and Regional Data],  
**Charalambos A Chadjigeorgiou\*** [Country and Regional Data],  
**Parinya Chamnan\*** [Country and Regional Data],  
**Snehalatha Chamukuttan\*** [Country and Regional Data],  
**Queenie Chan\*** [Country and Regional Data],  
**Fadi J Charchar\*** [Country and Regional Data],

Nish Chaturvedi\* [Country and Regional Data],  
Chien-Jen Chen\* [Country and Regional Data],  
Huashuai Chen\* [Country and Regional Data],  
Long-Sheng Chen\* [Country and Regional Data],  
Ching-Yu Cheng\* [Country and Regional Data],  
Bahman Cheraghian\* [Country and Regional Data],  
Angela Chetrit\* [Country and Regional Data],  
Shu-Ti Chiou\* [Country and Regional Data],  
María-Dolores Chirlaque\* [Country and Regional Data],  
Jerzy Chudek\* [Country and Regional Data],  
Renata Cifkova\* [Country and Regional Data],  
Massimo Cirillo\* [Country and Regional Data],  
Frank Claessens\* [Country and Regional Data],  
Janine Clarke\* [Country and Regional Data],  
Emmanuel Cohen\* [Country and Regional Data],  
Hans Concin\* [Country and Regional Data],  
Cyrus Cooper\* [Country and Regional Data],  
Cojocar R Cosmin\* [Country and Regional Data],  
Simona Costanzo\* [Country and Regional Data],  
Melanie J Cowan\* [Country and Regional Data],  
Chris Cowell\* [Country and Regional Data],  
Amelia C Crampin\* [Country and Regional Data],  
Ana B Crujeiras\* [Country and Regional Data],  
Juan J Cruz\* [Country and Regional Data],  
Felipe V Cureau\* [Country and Regional Data],  
Sarah Cuschieri\* [Country and Regional Data],  
Graziella D'Arrigo\* [Country and Regional Data],  
Eleonora d'Orsi\* [Country and Regional Data],  
Haroldo da Silva-Ferreira\* [Country and Regional Data],  
Jean Dallongeville\* [Country and Regional Data],  
Albertino Damasceno\* [Country and Regional Data],  
Rachel Dankner\* [Country and Regional Data],  
Saeed Dastgiri\* [Country and Regional Data],  
Luc Dauchet\* [Country and Regional Data],  
Kairat Davletov\* [Country and Regional Data],  
Amalia De Curtis\* [Country and Regional Data],  
Giovanni de Gaetano\* [Country and Regional Data],  
Stefaan De Henauw\* [Country and Regional Data],  
David De Ridder\* [Country and Regional Data],

Mohan Deepa\* [Country and Regional Data],  
Vincent DeGennaro Jr\* [Country and Regional Data],  
Stefaan Demarest\* [Country and Regional Data],  
Elaine Dennison\* [Country and Regional Data],  
Valérie Deschamps\* [Country and Regional Data],  
Meghnath Dhimal\* [Country and Regional Data],  
Zivka Dika\* [Country and Regional Data],  
Shirin Djalalinia\* [Country and Regional Data],  
Chiara Donfrancesco\* [Country and Regional Data],  
Maria Dorobantu\* [Country and Regional Data],  
Nico Dragano\* [Country and Regional Data],  
Wojciech Drygas\* [Country and Regional Data],  
Shufa Du\* [Country and Regional Data],  
Yong Du\* [Country and Regional Data],  
Charmaine A Duante\* [Country and Regional Data],  
Priscilla Duboz\* [Country and Regional Data],  
Rosemary B Duda\* [Country and Regional Data],  
Anar Dushpanova\* [Country and Regional Data],  
Vilnis Dzerve\* [Country and Regional Data],  
Elzbieta Dziankowska-Zaborszczyk\* [Country and Regional Data],  
Narges Ebrahimi\* [Country and Regional Data],  
Ricky Eddie\* [Country and Regional Data],  
Ebrahim Eftekhar\* [Country and Regional Data],  
Vasiliki Efthymiou\* [Country and Regional Data],  
Eruke E Egbagbe\* [Country and Regional Data],  
Robert Eggertsen\* [Country and Regional Data],  
Sareh Eghtesad\* [Country and Regional Data],  
Clara Ladi Ejembi\* [Country and Regional Data],  
Mohammad El-Khateeb\* [Country and Regional Data],  
Jalila El Ati\* [Country and Regional Data],  
Denise Eldemire-Shearer\* [Country and Regional Data],  
Roberto Elosua\* [Country and Regional Data],  
Ofem Enang\* [Country and Regional Data],  
Rajiv T Erasmus\* [Country and Regional Data],  
Cihangir Erem\* [Country and Regional Data],  
Gul Ergor\* [Country and Regional Data],  
Louise Eriksen\* [Country and Regional Data],  
Johan G Eriksson\* [Country and Regional Data],  
Ali Esmaeili\* [Country and Regional Data],

Roger G Evans\* [Country and Regional Data],  
Guy Fagherazzi\* [Country and Regional Data],  
Noushin Fahimfar\* [Country and Regional Data],  
Ildar Fakhradiyev\* [Country and Regional Data],  
Albina A Fakhretdinova\* [Country and Regional Data],  
Caroline H Fall\* [Country and Regional Data],  
Elnaz Faramarzi\* [Country and Regional Data],  
Mojtaba Farjam\* [Country and Regional Data],  
Farshad Farzadfar\* [Country and Regional Data],  
Yosef Farzi\* [Country and Regional Data],  
Mohammad Reza Fattahi\* [Country and Regional Data],  
Asher Fawwad\* [Country and Regional Data],  
Francisco J Felix-Redondo\* [Country and Regional Data],  
Trevor S Ferguson\* [Country and Regional Data],  
Daniel Fernández-Bergés\* [Country and Regional Data],  
Desha R Fernando\* [Country and Regional Data],  
Thomas Ferrao\* [Country and Regional Data],  
Marika Ferrari\* [Country and Regional Data],  
Marco M Ferrario\* [Country and Regional Data],  
Catterina Ferreccio\* [Country and Regional Data],  
Eldridge Ferrer\* [Country and Regional Data],  
Edith JM Feskens\* [Country and Regional Data],  
Günther Fink\* [Country and Regional Data],  
David Flood\* [Country and Regional Data],  
Maria Forsner\* [Country and Regional Data],  
Sandrine Fosse-Edorh\* [Country and Regional Data],  
Edward F Fottrell\* [Country and Regional Data],  
Heba M Fouad\* [Country and Regional Data],  
Damian K Francis\* [Country and Regional Data],  
Guillermo Frontera\* [Country and Regional Data],  
Isti I Fujjati\* [Country and Regional Data],  
Matsuda Fumihiko\* [Country and Regional Data],  
Takuro Furusawa\* [Country and Regional Data],  
Zbigniew Gaciong\* [Country and Regional Data],  
Fabio Galvano\* [Country and Regional Data],  
Sarah P Garnett\* [Country and Regional Data],  
Jean-Michel Gaspoz\* [Country and Regional Data],  
Magda Gasull\* [Country and Regional Data],  
Andrea Gazzinelli\* [Country and Regional Data],

Ulrike Gehring\* [Country and Regional Data],  
Ebrahim Ghaderi\* [Country and Regional Data],  
Seyyed-Hadi Ghamari\* [Country and Regional Data],  
Ali Ghanbari\* [Country and Regional Data],  
Erfan Ghasemi\* [Country and Regional Data],  
Oana-Florentina Gheorghe-Fronea\* [Country and Regional Data],  
Anup Ghimire\* [Country and Regional Data],  
Alessandro Gialluisi\* [Country and Regional Data],  
Simona Giampaoli\* [Country and Regional Data],  
Francesco Gianfagna\* [Country and Regional Data],  
Tiffany K Gill\* [Country and Regional Data],  
Jonathan Giovannelli\* [Country and Regional Data],  
Glen Gironella\* [Country and Regional Data],  
Aleksander Giwercman\* [Country and Regional Data],  
Marcel Goldberg\* [Country and Regional Data],  
David Goltzman\* [Country and Regional Data],  
Aleksandra Gomula\* [Country and Regional Data],  
Helen Gonçalves\* [Country and Regional Data],  
Mauer Gonçalves\* [Country and Regional Data],  
David A Gonzalez-Chica\* [Country and Regional Data],  
Marcela Gonzalez-Gross\* [Country and Regional Data],  
Juan P González-Rivas\* [Country and Regional Data],  
Angel R Gonzalez\* [Country and Regional Data],  
Atsushi Goto\* [Country and Regional Data],  
Frederic Gottrand\* [Country and Regional Data],  
Dušan Grafnetter\* [Country and Regional Data],  
Maria G Grammatikopoulou\* [Country and Regional Data],  
Andriene Grant\* [Country and Regional Data],  
Anne Sameline Grimsgaard\* [Country and Regional Data],  
Tomasz Grodzicki\* [Country and Regional Data],  
Anders Grøntved\* [Country and Regional Data],  
Giuseppe Grosso\* [Country and Regional Data],  
Dongfeng Gu\* [Country and Regional Data],  
Vilmundur Gudnason\* [Country and Regional Data],  
Ramiro Guerrero\* [Country and Regional Data],  
Idris Guessous\* [Country and Regional Data],  
Unjali P Gujral\* [Country and Regional Data],  
Rajeev Gupta\* [Country and Regional Data],  
Laura Gutierrez\* [Country and Regional Data],

Xinyi Gwee\* [Country and Regional Data],  
Seongjun Ha\* [Country and Regional Data],  
Rosa Haghshenas\* [Country and Regional Data],  
Hamid Hakimi\* [Country and Regional Data],  
Ian R Hambleton\* [Country and Regional Data],  
Behrooz Hamzeh\* [Country and Regional Data],  
Dominique Hange\* [Country and Regional Data],  
Sari Hantunen\* [Country and Regional Data],  
Jie Hao\* [Country and Regional Data],  
Javad Harooni\* [Country and Regional Data],  
Seyed Mohammad Hashemi-Shahri\* [Country and Regional Data],  
Jun Hata\* [Country and Regional Data],  
Alison J Hayes\* [Country and Regional Data],  
Jiang He\* [Country and Regional Data],  
Christin Heidemann\* [Country and Regional Data],  
Rafael dos Santos Henrique\* [Country and Regional Data],  
Ana Henriques\* [Country and Regional Data],  
Sauli Herrala\* [Country and Regional Data],  
Karl-Heinz Herzig\* [Country and Regional Data],  
Ramin Heshmat\* [Country and Regional Data],  
Allan G Hill\* [Country and Regional Data],  
Sai Yin Ho\* [Country and Regional Data],  
Michelle Holdsworth\* [Country and Regional Data],  
Reza Homayounfar\* [Country and Regional Data],  
Wilma M Hopman\* [Country and Regional Data],  
Andrea RVR Horimoto\* [Country and Regional Data],  
Claudia Hormiga\* [Country and Regional Data],  
Bernardo L Horta\* [Country and Regional Data],  
Leila Houti\* [Country and Regional Data],  
Christina Howitt\* [Country and Regional Data],  
Thein Thein Htay\* [Country and Regional Data],  
Aung Soe Htet\* [Country and Regional Data],  
Maung Maung Than Htike\* [Country and Regional Data],  
José María Huerta\* [Country and Regional Data],  
Ilpo Tapani Huhtaniemi\* [Country and Regional Data],  
Laetitia Huiart\* [Country and Regional Data],  
Martijn Huisman\* [Country and Regional Data],  
Monica Hunsberger\* [Country and Regional Data],  
Abdullatif Hussein\* [Country and Regional Data],

Inge Huybrechts\* [Country and Regional Data],  
Licia Iacoviello\* [Country and Regional Data],  
Ellina M Iakupova\* [Country and Regional Data],  
Anna G Iannone\* [Country and Regional Data],  
Norazizah Ibrahim Wong\* [Country and Regional Data],  
Chinwuba Ijoma\* [Country and Regional Data],  
Nayu Ikeda\* [Country and Regional Data],  
Vilma E Irazola\* [Country and Regional Data],  
Takafumi Ishida\* [Country and Regional Data],  
Sheikh Mohammed Shariful Islam\* [Country and Regional Data],  
Duygu Islek\* [Country and Regional Data],  
Till Ittermann\* [Country and Regional Data],  
Masanori Iwasaki\* [Country and Regional Data],  
Tuija Jääskeläinen\* [Country and Regional Data],  
Jeremy M Jacobs\* [Country and Regional Data],  
Hashem Y Jaddou\* [Country and Regional Data],  
Michel Jadoul\* [Country and Regional Data],  
Bakary Jallow\* [Country and Regional Data],  
Kenneth James\* [Country and Regional Data],  
Kazi M Jamil\* [Country and Regional Data],  
Edward Janus\* [Country and Regional Data],  
Marjo-Riitta Jarvelin\* [Country and Regional Data],  
Grazyna Jasienska\* [Country and Regional Data],  
Ana Jelakovi\* [Country and Regional Data],  
Bojan Jelakovi\* [Country and Regional Data],  
Garry Jennings\* [Country and Regional Data],  
Anjani Kumar Jha\* [Country and Regional Data],  
AM Jibo\* [Country and Regional Data],  
Ramon O Jimenez\* [Country and Regional Data],  
Karl-Heinz Jöckel\* [Country and Regional Data],  
Jari J Jokelainen\* [Country and Regional Data],  
Jost B Jonas\* [Country and Regional Data],  
Josipa Josipovi\* [Country and Regional Data],  
Farahnaz Joukar\* [Country and Regional Data],  
Jacek Jó wiak\* [Country and Regional Data],  
Anthony Kafatos\* [Country and Regional Data],  
Eero O Kajantie\* [Country and Regional Data],  
Zhanna Kalmatayeva\* [Country and Regional Data],  
Ofra Kalter-Leibovici\* [Country and Regional Data],

Argyro Karakosta\* [Country and Regional Data],  
Khem B Karki\* [Country and Regional Data],  
Marzieh Katibeh\* [Country and Regional Data],  
Prasad Katulanda\* [Country and Regional Data],  
Jussi Kauhanen\* [Country and Regional Data],  
Gyulli M Kazakbaeva\* [Country and Regional Data],  
François F Kaze\* [Country and Regional Data],  
Calvin Ke\* [Country and Regional Data],  
Sirkka Keinänen-Kiukaanniemi\* [Country and Regional Data],  
Roya Kelishadi\* [Country and Regional Data],  
Andre P Kengne\* [Country and Regional Data],  
Maryam Keramati\* [Country and Regional Data],  
Mathilde Kersting\* [Country and Regional Data],  
Yousef Saleh Khader\* [Country and Regional Data],  
Kazem Khalagi\* [Country and Regional Data],  
Arsalan Khaledifar\* [Country and Regional Data],  
Davood Khalili\* [Country and Regional Data],  
Young-Ho Khang\* [Country and Regional Data],  
Bahareh Kheiri\* [Country and Regional Data],  
Motahareh Kheradmand\* [Country and Regional Data],  
Alireza Khosravi Farsani\* [Country and Regional Data],  
Ursula Kiechl-Kohlendorfer\* [Country and Regional Data],  
Sophia J Kiechl\* [Country and Regional Data],  
Stefan Kiechl\* [Country and Regional Data],  
Hyeon Chang Kim\* [Country and Regional Data],  
Andrew Kingston\* [Country and Regional Data],  
Heidi Klakk\* [Country and Regional Data],  
Jana Klanova\* [Country and Regional Data],  
Michael Knoflach\* [Country and Regional Data],  
Patrick Kolsteren\* [Country and Regional Data],  
Jürgen König\* [Country and Regional Data],  
Raija Korpelainen\* [Country and Regional Data],  
Paul Korrovits\* [Country and Regional Data],  
Jelena Kos\* [Country and Regional Data],  
Seppo Koskinen\* [Country and Regional Data],  
Sudhir Kowlessur\* [Country and Regional Data],  
Slawomir Koziel\* [Country and Regional Data],  
Wolfgang Kratzer\* [Country and Regional Data],  
Susanne Kriemler\* [Country and Regional Data],

**Peter Lund Kristensen\* [Country and Regional Data],  
Steinar Krokstad\* [Country and Regional Data],  
Daan Kromhout\* [Country and Regional Data],  
Ruzena Kubinova\* [Country and Regional Data],  
Urho M Kujala\* [Country and Regional Data],  
Mukhtar Kulimbet\* [Country and Regional Data],  
Vaitheeswaran Kulothungan\* [Country and Regional Data],  
Meena Kumari\* [Country and Regional Data],  
Vladimir Kutsenko\* [Country and Regional Data],  
Catherine Kyobutungi\* [Country and Regional Data],  
Quang Ngoc La\* [Country and Regional Data],  
Tiina Laatikainen\* [Country and Regional Data],  
Demetre Labadarios\* [Country and Regional Data],  
Carl Lachat\* [Country and Regional Data],  
Youcef Laid\* [Country and Regional Data],  
Lachmie Lall\* [Country and Regional Data],  
Anne Langsted\* [Country and Regional Data],  
Tiina Lankila\* [Country and Regional Data],  
Vera Lanska\* [Country and Regional Data],  
Georg Lappas\* [Country and Regional Data],  
Bagher Larijani\* [Country and Regional Data],  
Tint Swe Latt\* [Country and Regional Data],  
Martino Laurenzi\* [Country and Regional Data],  
Avula Laxmaiah\* [Country and Regional Data],  
Gwenaëlle Le Coroller\* [Country and Regional Data],  
Jeannette Lee\* [Country and Regional Data],  
Terho Lehtimäki\* [Country and Regional Data],  
Daniel Lemogoum\* [Country and Regional Data],  
Gabriel M Leung\* [Country and Regional Data],  
Charlie Lim\* [Country and Regional Data],  
Wei-Yen Lim\* [Country and Regional Data],  
M Fernanda Lima-Costa\* [Country and Regional Data],  
Hsien-Ho Lin\* [Country and Regional Data],  
Yi-Jing Lin\* [Country and Regional Data],  
Lars Lind\* [Country and Regional Data],  
Lauren Lissner\* [Country and Regional Data],  
Liping Liu\* [Country and Regional Data],  
Xiaotian Liu\* [Country and Regional Data],  
Wei-Cheng Lo\* [Country and Regional Data],**

Helle-Mai Loit\* [Country and Regional Data],  
Esther Lopez-Garcia\* [Country and Regional Data],  
Tania Lopez\* [Country and Regional Data],  
José Eugenio Lozano\* [Country and Regional Data],  
Dalia Luksiene\* [Country and Regional Data],  
Annamari Lundqvist\* [Country and Regional Data],  
Nuno Lunet\* [Country and Regional Data],  
Thomas Lung\* [Country and Regional Data],  
Michala Lustigová\* [Country and Regional Data],  
Guansheng Ma\* [Country and Regional Data],  
George LL Machado-Coelho\* [Country and Regional Data],  
Aristides M Machado-Rodrigues\* [Country and Regional Data],  
Enguerran Macia\* [Country and Regional Data],  
Luisa M Macieira\* [Country and Regional Data],  
Ahmed A Madar\* [Country and Regional Data],  
Gladys E Maestre\* [Country and Regional Data],  
Stefania Maggi\* [Country and Regional Data],  
Dianna J Magliano\* [Country and Regional Data],  
Emmanuella Magriplis\* [Country and Regional Data],  
Gowri Mahasampath\* [Country and Regional Data],  
Bernard Maire\* [Country and Regional Data],  
Marcia Makdisse\* [Country and Regional Data],  
Konstantinos Makrilakis\* [Country and Regional Data],  
Mohammad-Reza Malekpour\* [Country and Regional Data],  
Fatemeh Malekzadeh\* [Country and Regional Data],  
Reza Malekzadeh\* [Country and Regional Data],  
Sofia Malyutina\* [Country and Regional Data],  
Lynell V Maniego\* [Country and Regional Data],  
Yannis Manios\* [Country and Regional Data],  
Fariborz Mansour-Ghanaei\* [Country and Regional Data],  
Enzo Manzato\* [Country and Regional Data],  
Mala Ali Mapatano\* [Country and Regional Data],  
Anie Marcil\* [Country and Regional Data],  
Francisco Mardones\* [Country and Regional Data],  
Paula Margozzini\* [Country and Regional Data],  
Pedro Marques-Vidal\* [Country and Regional Data],  
Larissa Pruner Marques\* [Country and Regional Data],  
Reynaldo Martorell\* [Country and Regional Data],  
Luis P Mascarenhas\* [Country and Regional Data],

Mannix Masimango Imani\* [Country and Regional Data],  
Masoud Masinaei\* [Country and Regional Data],  
Shariq R Masoodi\* [Country and Regional Data],  
Ellisiv B Mathiesen\* [Country and Regional Data],  
Prashant Mathur\* [Country and Regional Data],  
Tandi E Matsha\* [Country and Regional Data],  
Jean Claude N Mbanya\* [Country and Regional Data],  
Anselmo J Mc Donald Posso\* [Country and Regional Data],  
Shelly R McFarlane\* [Country and Regional Data],  
Stephen T McGarvey\* [Country and Regional Data],  
Scott B McLean\* [Country and Regional Data],  
Breige A McNulty\* [Country and Regional Data],  
Sounnia Mediene Benchechor\* [Country and Regional Data],  
Kirsten Mehlig\* [Country and Regional Data],  
Amir Houshang Mehrparvar\* [Country and Regional Data],  
Jesus D Melgarejo\* [Country and Regional Data],  
Fabián Méndez\* [Country and Regional Data],  
Ana Maria B Menezes\* [Country and Regional Data],  
Alibek Mereke\* [Country and Regional Data],  
Indrapal I Meshram\* [Country and Regional Data],  
Diane T Meto\* [Country and Regional Data],  
Nathalie Michels\* [Country and Regional Data],  
Cláudia S Minderico\* [Country and Regional Data],  
GK Mini\* [Country and Regional Data],  
Juan Francisco Miquel\* [Country and Regional Data],  
J Jaime Miranda\* [Country and Regional Data],  
Mohammad Reza Mirjalili\* [Country and Regional Data],  
Daphne Mirkopoulou\* [Country and Regional Data],  
Pietro A Modesti\* [Country and Regional Data],  
Sahar Saeedi Moghaddam\* [Country and Regional Data],  
Kazem Mohammad\* [Country and Regional Data],  
Mohammad Reza Mohammadi\* [Country and Regional Data],  
Zahra Mohammadi\* [Country and Regional Data],  
Noushin Mohammadifard\* [Country and Regional Data],  
Reza Mohammadpourhodki\* [Country and Regional Data],  
Viswanathan Mohan\* [Country and Regional Data],  
Muhammad Fadhli Mohd Yusoff\* [Country and Regional Data],  
Iraj Mohebbi\* [Country and Regional Data],  
Niels C Møller\* [Country and Regional Data],

Dénes Molnár\* [Country and Regional Data],  
Amirabbas Momenan\* [Country and Regional Data],  
Roger A Montenegro Mendoza\* [Country and Regional Data],  
Mahmood Moosazadeh\* [Country and Regional Data],  
Farhad Moradpour\* [Country and Regional Data],  
Alain Morejon\* [Country and Regional Data],  
Luis A Moreno\* [Country and Regional Data],  
Karen Morgan\* [Country and Regional Data],  
Suzanne N Morin\* [Country and Regional Data],  
George Moschonis\* [Country and Regional Data],  
Alireza Moslem\* [Country and Regional Data],  
Mildrey Mosquera\* [Country and Regional Data],  
Malgorzata Mossakowska\* [Country and Regional Data],  
Aya Mostafa\* [Country and Regional Data],  
Seyed-Ali Mostafavi\* [Country and Regional Data],  
Eugen Mota\* [Country and Regional Data],  
Jorge Mota\* [Country and Regional Data],  
Maria Mota\* [Country and Regional Data],  
Mohammad Esmaeel Motlagh\* [Country and Regional Data],  
Jorge Motta\* [Country and Regional Data],  
Kelias P Msyamboza\* [Country and Regional Data],  
Thet Thet Mu\* [Country and Regional Data],  
Maria L Muiesan\* [Country and Regional Data],  
Patricia B Munroe\* [Country and Regional Data],  
Jaakko Mursu\* [Country and Regional Data],  
Kamarul Imran Musa\* [Country and Regional Data],  
Norlaila Mustafa\* [Country and Regional Data],  
Muel Telo MC Muyer\* [Country and Regional Data],  
Iraj Nabipour\* [Country and Regional Data],  
Gabriele Nagel\* [Country and Regional Data],  
Balkish M Naidu\* [Country and Regional Data],  
Farid Najafi\* [Country and Regional Data],  
Jana Námešná\* [Country and Regional Data],  
Ei Ei K Nang\* [Country and Regional Data],  
Vinay B Nangia\* [Country and Regional Data],  
KM Venkat Narayan\* [Country and Regional Data],  
Take Naseri\* [Country and Regional Data],  
Ana J Navarro-Ramírez\* [Country and Regional Data],  
Nareemarn Neelapaichit\* [Country and Regional Data],

Azim Nejatizadeh\* [Country and Regional Data],  
Ilona Nenko\* [Country and Regional Data],  
Flavio Nervi\* [Country and Regional Data],  
Tze Pin Ng\* [Country and Regional Data],  
Chung T Nguyen\* [Country and Regional Data],  
Nguyen D Nguyen\* [Country and Regional Data],  
Quang Ngoc Nguyen\* [Country and Regional Data],  
Michael Y Ni\* [Country and Regional Data],  
Peng Nie\* [Country and Regional Data],  
Ramfis E Nieto-Martínez\* [Country and Regional Data],  
Guang Ning\* [Country and Regional Data],  
Toshiharu Ninomiya\* [Country and Regional Data],  
Nobuo Nishi\* [Country and Regional Data],  
Marianna Noale\* [Country and Regional Data],  
Oscar A Noboa\* [Country and Regional Data],  
Mitsuhiko Noda\* [Country and Regional Data],  
Børge G Nordestgaard\* [Country and Regional Data],  
Davide Noto\* [Country and Regional Data],  
Mohannad Al Nsour\* [Country and Regional Data],  
Irfan Nuho lu\* [Country and Regional Data],  
Moffat Nyirenda\* [Country and Regional Data],  
Terence W O'Neill\* [Country and Regional Data],  
Kyungwon Oh\* [Country and Regional Data],  
Ryutaro Ohtsuka\* [Country and Regional Data],  
Mohd Azahadi Omar\* [Country and Regional Data],  
Altan Onat\* [Country and Regional Data],  
Sok King Ong\* [Country and Regional Data],  
Obinna Onodugo\* [Country and Regional Data],  
Pedro Ordunez\* [Country and Regional Data],  
Rui Ornelas\* [Country and Regional Data],  
Pedro J Ortiz\* [Country and Regional Data],  
Clive Osmond\* [Country and Regional Data],  
Afshin Ostovar\* [Country and Regional Data],  
Johanna A Otero\* [Country and Regional Data],  
Charlotte B Ottendahl\* [Country and Regional Data],  
Akaninyene Otu\* [Country and Regional Data],  
Ellis Owusu-Dabo\* [Country and Regional Data],  
Elena Pahomova\* [Country and Regional Data],  
Luigi Palmieri\* [Country and Regional Data],

**Wen-Harn Pan\* [Country and Regional Data],**  
**Demosthenes Panagiotakos\* [Country and Regional Data],**  
**Songhomitra Panda-Jonas\* [Country and Regional Data],**  
**Zengchang Pang\* [Country and Regional Data],**  
**Francesco Panza\* [Country and Regional Data],**  
**Mariela Paoli\* [Country and Regional Data],**  
**Suyeon Park\* [Country and Regional Data],**  
**Mahboubeh Parsaeian\* [Country and Regional Data],**  
**Chona F Patalen\* [Country and Regional Data],**  
**Nikhil D Patel\* [Country and Regional Data],**  
**Raimund Pechlaner\* [Country and Regional Data],**  
**Ivan Pe in\* [Country and Regional Data],**  
**João M Pedro\* [Country and Regional Data],**  
**Sergio Viana Peixoto\* [Country and Regional Data],**  
**Markku Peltonen\* [Country and Regional Data],**  
**Alexandre C Pereira\* [Country and Regional Data],**  
**Thaliane Mayara Pessôa dos Prazeres\* [Country and Regional Data],**  
**Niloofar Peykari\* [Country and Regional Data],**  
**Modou Cheyassin Phall\* [Country and Regional Data],**  
**Son Thai Pham\* [Country and Regional Data],**  
**Rafael N Pichardo\* [Country and Regional Data],**  
**Iris Pigeot\* [Country and Regional Data],**  
**Hynek Pikhart\* [Country and Regional Data],**  
**Aida Pilav\* [Country and Regional Data],**  
**Pavel Piler\* [Country and Regional Data],**  
**Freda Pitakaka\* [Country and Regional Data],**  
**Aleksandra Piwonska\* [Country and Regional Data],**  
**Andreia N Pizarro\* [Country and Regional Data],**  
**Pedro Plans-Rubió\* [Country and Regional Data],**  
**Silvia Plata\* [Country and Regional Data],**  
**Barry M Popkin\* [Country and Regional Data],**  
**Miquel Porta\* [Country and Regional Data],**  
**Anil Poudyal\* [Country and Regional Data],**  
**Farhad Pourfarzi\* [Country and Regional Data],**  
**Akram Pourshams\* [Country and Regional Data],**  
**Hossein Poustchi\* [Country and Regional Data],**  
**Dorairaj Prabhakaran\* [Country and Regional Data],**  
**Rajendra Pradeepa\* [Country and Regional Data],**  
**Alison J Price\* [Country and Regional Data],**

Jacqueline F Price\* [Country and Regional Data],  
Rui Providencia\* [Country and Regional Data],  
Jardena J Puder\* [Country and Regional Data],  
Soile Puhakka\* [Country and Regional Data],  
Margus Punab\* [Country and Regional Data],  
Qing Qiao\* [Country and Regional Data],  
Mostafa Qorbani\* [Country and Regional Data],  
Hedley K Quintana\* [Country and Regional Data],  
Tran Quoc Bao\* [Country and Regional Data],  
Ricardas Radisauskas\* [Country and Regional Data],  
Salar Rahimikazerooni\* [Country and Regional Data],  
Olli Raitakari\* [Country and Regional Data],  
Ambady Ramachandran\* [Country and Regional Data],  
Manuel Ramirez-Zea\* [Country and Regional Data],  
Jacqueline Ramke\* [Country and Regional Data],  
Elisabete Ramos\* [Country and Regional Data],  
Rafel Ramos\* [Country and Regional Data],  
Lekhraj Rampal\* [Country and Regional Data],  
Sanjay Rampal\* [Country and Regional Data],  
Sheena E Ramsay\* [Country and Regional Data],  
Daniel A Rangel Reina\* [Country and Regional Data],  
Ravindra P Rannan-Eliya\* [Country and Regional Data],  
Mohammad-Mahdi Rashidi\* [Country and Regional Data],  
Josep Redon\* [Country and Regional Data],  
Jane DP Renner\* [Country and Regional Data],  
Cézane P Reuter\* [Country and Regional Data],  
Luis Revilla\* [Country and Regional Data],  
Negar Rezaei\* [Country and Regional Data],  
Abbas Rezaianzadeh\* [Country and Regional Data],  
Yeunsook Rho\* [Country and Regional Data],  
Fernando Rigo\* [Country and Regional Data],  
Leanne M Riley\* [Country and Regional Data],  
Ulf Risérus\* [Country and Regional Data],  
Reina G Roa\* [Country and Regional Data],  
Louise Robinson\* [Country and Regional Data],  
Wendy E Rodríguez-Anderson\* [Country and Regional Data],  
Fernando Rodríguez-Artalejo\* [Country and Regional Data],  
María del Cristo Rodríguez-Perez\* [Country and Regional Data],  
Laura A Rodríguez-Villamizar\* [Country and Regional Data],

Andrea Y Rodríguez\* [Country and Regional Data],  
Ulla Roggenbuck\* [Country and Regional Data],  
Peter Rohloff\* [Country and Regional Data],  
Rosalba Rojas-Martinez\* [Country and Regional Data],  
Elisabetta L Romeo\* [Country and Regional Data],  
Annika Rosengren\* [Country and Regional Data],  
Joel GR Roy\* [Country and Regional Data],  
Adolfo Rubinstein\* [Country and Regional Data],  
Maria Ruiz-Castell\* [Country and Regional Data],  
Paola Russo\* [Country and Regional Data],  
Petra Rust\* [Country and Regional Data],  
Marcin Rutkowski\* [Country and Regional Data],  
Charumathi Sabanayagam\* [Country and Regional Data],  
Hamideh Sabbaghi\* [Country and Regional Data],  
Harshpal S Sachdev\* [Country and Regional Data],  
Alireza Sadjadi\* [Country and Regional Data],  
Ali Reza Safarpour\* [Country and Regional Data],  
Sare Safi\* [Country and Regional Data],  
Saeid Safiri\* [Country and Regional Data],  
Mohammad Hossien Saghii\* [Country and Regional Data],  
Olfa Saidi\* [Country and Regional Data],  
Satoko Sakata\* [Country and Regional Data],  
Nader Saki\* [Country and Regional Data],  
Sanja Šalaj\* [Country and Regional Data],  
Benoit Salanave\* [Country and Regional Data],  
Jukka T Salonen\* [Country and Regional Data],  
Massimo Salvetti\* [Country and Regional Data],  
Jose Sánchez-Abanto\* [Country and Regional Data],  
Diana A Santos\* [Country and Regional Data],  
Lèlita C Santos\* [Country and Regional Data],  
Maria Paula Santos\* [Country and Regional Data],  
Rute Santos\* [Country and Regional Data],  
Tamara R Santos\* [Country and Regional Data],  
Jouko L Saramies\* [Country and Regional Data],  
Luis B Sardinha\* [Country and Regional Data],  
Nizal Sarrafzadegan\* [Country and Regional Data],  
Yoko Sato\* [Country and Regional Data],  
Kai-Uwe Saum\* [Country and Regional Data],  
Stefan Savin\* [Country and Regional Data],

**Norie Sawada\* [Country and Regional Data],  
Mariana Sbaraini\* [Country and Regional Data],  
Marcia Sczufca\* [Country and Regional Data],  
Beatriz D Schaan\* [Country and Regional Data],  
Herman Schargrotsky\* [Country and Regional Data],  
Christa Scheidt-Nave\* [Country and Regional Data],  
Sabine Schipf\* [Country and Regional Data],  
Amand Floriaan Schmidt\* [Country and Regional Data],  
Börge Schmidt\* [Country and Regional Data],  
Carsten O Schmidt\* [Country and Regional Data],  
Peter Schnohr\* [Country and Regional Data],  
Catherine Mary Schooling\* [Country and Regional Data],  
Ben Schöttker\* [Country and Regional Data],  
Sara Schramm\* [Country and Regional Data],  
Sylvain Sebert\* [Country and Regional Data],  
Moslem Sedaghattalab\* [Country and Regional Data],  
Aye Aye Sein\* [Country and Regional Data],  
Abhijit Sen\* [Country and Regional Data],  
Sadaf G Sepanlou\* [Country and Regional Data],  
Jennifer Servais\* [Country and Regional Data],  
Ronel Sewpaul\* [Country and Regional Data],  
Svetlana Shalnova\* [Country and Regional Data],  
Seyed Morteza Shamshirgaran\* [Country and Regional Data],  
Coimbatore Subramaniam Shanthirani\* [Country and Regional Data],  
Maryam Sharafkhah\* [Country and Regional Data],  
Sanjib K Sharma\* [Country and Regional Data],  
Almaz Sharman\* [Country and Regional Data],  
Jonathan E Shaw\* [Country and Regional Data],  
Amaneh Shayanrad\* [Country and Regional Data],  
Ali Akbar Shayesteh\* [Country and Regional Data],  
Kenji Shibuya\* [Country and Regional Data],  
Hana Shimizu-Furusawa\* [Country and Regional Data],  
Rahman Shiri\* [Country and Regional Data],  
Marat Shoranov\* [Country and Regional Data],  
Namuna Shrestha\* [Country and Regional Data],  
Khairil Si-Ramlee\* [Country and Regional Data],  
Alfonso Siani\* [Country and Regional Data],  
Mark J Siedner\* [Country and Regional Data],  
Diego Augusto Santos Silva\* [Country and Regional Data],**

Xueling Sim\* [Country and Regional Data],  
Mary Simon\* [Country and Regional Data],  
Judith Simons\* [Country and Regional Data],  
Leon A Simons\* [Country and Regional Data],  
Michael Sjöström\* [Country and Regional Data],  
Jolanta Slowikowska-Hilczer\* [Country and Regional Data],  
Przemysław Słusarczyk\* [Country and Regional Data],  
Liam Smeeth\* [Country and Regional Data],  
Eugène Sobngwi\* [Country and Regional Data],  
Stefan Söderberg\* [Country and Regional Data],  
Agustinus Soemantri\* [Country and Regional Data],  
Vincenzo Solfrizzi\* [Country and Regional Data],  
Mohammad Hossein Somi\* [Country and Regional Data],  
Aïcha Soumaré\* [Country and Regional Data],  
Alfonso Sousa-Poza\* [Country and Regional Data],  
Mafalda Sousa-Uva\* [Country and Regional Data],  
Karen Sparrenberger\* [Country and Regional Data],  
Jan A Staessen\* [Country and Regional Data],  
Andreas Stang\* [Country and Regional Data],  
Bill Stavreski\* [Country and Regional Data],  
Jostein Steene-Johannessen\* [Country and Regional Data],  
Peter Stehle\* [Country and Regional Data],  
Aryeh D Stein\* [Country and Regional Data],  
Jochanan Stessman\* [Country and Regional Data],  
Jakub Stokwiszewski\* [Country and Regional Data],  
Karien Stronks\* [Country and Regional Data],  
Milton F Suarez-Ortegón\* [Country and Regional Data],  
Phalakorn Suebsamran\* [Country and Regional Data],  
Machi Suka\* [Country and Regional Data],  
Chien-An Sun\* [Country and Regional Data],  
Jianping Sun\* [Country and Regional Data],  
Johan Sundström\* [Country and Regional Data],  
Paibul Suriyawongpaisal\* [Country and Regional Data],  
René Charles Sylva\* [Country and Regional Data],  
E Shyong Tai\* [Country and Regional Data],  
Furusawa Takuro\* [Country and Regional Data],  
Abdonas Tamosiunas\* [Country and Regional Data],  
Eng Joo Tan\* [Country and Regional Data],  
Baimakhan Tanabayev\* [Country and Regional Data],

**Nikhil Tandon\* [Country and Regional Data],  
Mohammed Rasoul Tarawneh\* [Country and Regional Data],  
Carolina B Tarqui-Mamani\* [Country and Regional Data],  
Anne Taylor\* [Country and Regional Data],  
Tania Tello\* [Country and Regional Data],  
Yih Chung Tham\* [Country and Regional Data],  
KR Thankappan\* [Country and Regional Data],  
Holger Theobald\* [Country and Regional Data],  
Xenophon Theodoridis\* [Country and Regional Data],  
Nihal Thomas\* [Country and Regional Data],  
Amanda G Thrift\* [Country and Regional Data],  
Erik J Timmermans\* [Country and Regional Data],  
Hanna K Tolonen\* [Country and Regional Data],  
Janne S Tolstrup\* [Country and Regional Data],  
Maciej Tomaszewski\* [Country and Regional Data],  
Murat Topbas\* [Country and Regional Data],  
Michael J Tornaritis\* [Country and Regional Data],  
Maties Torrent\* [Country and Regional Data],  
Laura Torres-Collado\* [Country and Regional Data],  
Giota Touloumi\* [Country and Regional Data],  
Pierre Traissac\* [Country and Regional Data],  
Areti Triantafyllou\* [Country and Regional Data],  
Oanh TH Trinh\* [Country and Regional Data],  
Yu-Hsiang Tsao\* [Country and Regional Data],  
Thomas Tsiampalis\* [Country and Regional Data],  
Shoichiro Tsugane\* [Country and Regional Data],  
John Tuitele\* [Country and Regional Data],  
Azaliia M Tuliakova\* [Country and Regional Data],  
Marshall K Tulloch-Reid\* [Country and Regional Data],  
Tomi-Pekka Tuomainen\* [Country and Regional Data],  
Maria L Turley\* [Country and Regional Data],  
Evangelia Tzala\* [Country and Regional Data],  
Christophe Tzourio\* [Country and Regional Data],  
Peter Ueda\* [Country and Regional Data],  
Eunice Ugel\* [Country and Regional Data],  
Flora AM Ukoli\* [Country and Regional Data],  
Hanno Ulmer\* [Country and Regional Data],  
Hannu MT Uusitalo\* [Country and Regional Data],  
Gonzalo Valdivia\* [Country and Regional Data],**

Damaskini Valvi\* [Country and Regional Data],  
Rob M van Dam\* [Country and Regional Data],  
Bert-Jan van den Born\* [Country and Regional Data],  
Johan Van der Heyden\* [Country and Regional Data],  
Hoang Van Minh\* [Country and Regional Data],  
Lenie van Rossem\* [Country and Regional Data],  
Natasja M Van Schoor\* [Country and Regional Data],  
Irene GM van Valkengoed\* [Country and Regional Data],  
Dirk Vanderschueren\* [Country and Regional Data],  
Diego Vanuzzo\* [Country and Regional Data],  
Anette Varbo\* [Country and Regional Data],  
Senthil K Vasan\* [Country and Regional Data],  
Tomas Vega\* [Country and Regional Data],  
Toomas Veidebaum\* [Country and Regional Data],  
Gustavo Velasquez-Melendez\* [Country and Regional Data],  
Charlotte Verdot\* [Country and Regional Data],  
Giovanni Veronesi\* [Country and Regional Data],  
Roosmarijn Verstraeten\* [Country and Regional Data],  
Cesar G Victora\* [Country and Regional Data],  
Lucie Viet\* [Country and Regional Data],  
Luis Villarroel\* [Country and Regional Data],  
Jesus Vioque\* [Country and Regional Data],  
Jyrki K Virtanen\* [Country and Regional Data],  
Bharathi Viswanathan\* [Country and Regional Data],  
Peter Vollenweider\* [Country and Regional Data],  
Ari Voutilainen\* [Country and Regional Data],  
Martine Vrijheid\* [Country and Regional Data],  
Alisha N Wade\* [Country and Regional Data],  
Janette Walton\* [Country and Regional Data],  
Wan Mohamad Wan Bebakar\* [Country and Regional Data],  
Wan Nazaimoon Wan Mohamud\* [Country and Regional Data],  
Chongjian Wang\* [Country and Regional Data],  
Huijun Wang\* [Country and Regional Data],  
Ningli Wang\* [Country and Regional Data],  
Qian Wang\* [Country and Regional Data],  
Weiqing Wang\* [Country and Regional Data],  
Ya Xing Wang\* [Country and Regional Data],  
Yi-Ren Wang\* [Country and Regional Data],  
Ying-Wei Wang\* [Country and Regional Data],

S Goya Wannamethee\* [Country and Regional Data],  
Karen Webster-Kerr\* [Country and Regional Data],  
Niels Wedderkopp\* [Country and Regional Data],  
Wenbin Wei\* [Country and Regional Data],  
Leo D Westbury\* [Country and Regional Data],  
Peter H Whincup\* [Country and Regional Data],  
Kurt Widhalm\* [Country and Regional Data],  
Indah S Widyahening\* [Country and Regional Data],  
Andrzej Wi cek\* [Country and Regional Data],  
Nilmini Wijemunige\* [Country and Regional Data],  
Rainford J Wilks\* [Country and Regional Data],  
Karin Willeit\* [Country and Regional Data],  
Peter Willeit\* [Country and Regional Data],  
Tom Wilsgaard\* [Country and Regional Data],  
Bogdan Wojtyniak\* [Country and Regional Data],  
Roy A Wong-McClure\* [Country and Regional Data],  
Andrew Wong\* [Country and Regional Data],  
Emily B Wong\* [Country and Regional Data],  
Mark Woodward\* [Country and Regional Data],  
Chao-Chun Wu\* [Country and Regional Data],  
Frederick C Wu\* [Country and Regional Data],  
Haiquan Xu\* [Country and Regional Data],  
Liang Xu\* [Country and Regional Data],  
Yu Xu\* [Country and Regional Data],  
Nor Azwany Yaacob\* [Country and Regional Data],  
Li Yan\* [Country and Regional Data],  
Weili Yan\* [Country and Regional Data],  
Tabara Yasuharu\* [Country and Regional Data],  
Chao-Yu Yeh\* [Country and Regional Data],  
Moein Yoosefi\* [Country and Regional Data],  
Akihiro Yoshihara\* [Country and Regional Data],  
San-Lin You\* [Country and Regional Data],  
Novie O Younger-Coleman\* [Country and Regional Data],  
Yu-Ling Yu\* [Country and Regional Data],  
Ahmad Faudzi Yusoff\* [Country and Regional Data],  
Ahmad A Zainuddin\* [Country and Regional Data],  
Farhad Zamani\* [Country and Regional Data],  
Sabina Zambon\* [Country and Regional Data],  
Antonis Zampelas\* [Country and Regional Data],

Abdul Hamid Zargar\* [Country and Regional Data],  
Ko Ko Zaw\* [Country and Regional Data],  
Tomasz Zdrojewski\* [Country and Regional Data],  
Tajana Zeljkovic Vrkic\* [Country and Regional Data],  
Yi Zeng\* [Country and Regional Data],  
Bing Zhang\* [Country and Regional Data],  
Lei Zhang\* [Country and Regional Data],  
Luxia Zhang\* [Country and Regional Data],  
Zhen-Yu Zhang\* [Country and Regional Data],  
Ming-Hui Zhao\* [Country and Regional Data],  
Wenhua Zhao\* [Country and Regional Data],  
Bekbolat Zholdin\* [Country and Regional Data],  
Paul Zimmet\* [Country and Regional Data],  
Marie Zins\* [Country and Regional Data],  
Emanuel Zitt\* [Country and Regional Data],  
Nada Zoghalmi\* [Country and Regional Data],  
Julio Zuñiga Cisneros\* [Country and Regional Data]

## Summary

**Background**—Diabetes can be detected at the primary health-care level, and effective treatments lower the risk of complications. There are insufficient data on the coverage of treatment for diabetes and how it has changed. We estimated trends from 1990 to 2022 in diabetes prevalence and treatment for 200 countries and territories.

**Methods**—We used data from 1108 population-representative studies with 141 million participants aged 18 years and older with measurements of fasting glucose and glycated haemoglobin (HbA<sub>1c</sub>), and information on diabetes treatment. We defined diabetes as having a fasting plasma glucose (FPG) of 7·0 mmol/L or higher, having an HbA<sub>1c</sub> of 6·5% or higher, or taking medication for diabetes. We defined diabetes treatment as the proportion of people with diabetes who were taking medication for diabetes. We analysed the data in a Bayesian hierarchical meta-regression model to estimate diabetes prevalence and treatment.

**Findings**—In 2022, an estimated 828 million (95% credible interval [CrI] 757–908) adults (those aged 18 years and older) had diabetes, an increase of 630 million (554–713) from 1990. From 1990 to 2022, the age-standardised prevalence of diabetes increased in 131 countries for women and in 155 countries for men with a posterior probability of more than 0·80. The largest increases were in low-income and middle-income countries in southeast Asia (eg, Malaysia), south Asia (eg, Pakistan), the Middle East and north Africa (eg, Egypt), and Latin America and the Caribbean (eg, Jamaica, Trinidad and Tobago, and Costa Rica). Age-standardised prevalence neither increased nor decreased with a posterior probability of more than 0·80 in some countries in western and central Europe, sub-Saharan Africa, east Asia and the Pacific, Canada, and some Pacific island nations where prevalence was already high in 1990; it decreased with a posterior probability of more than 0·80 in women in Japan, Spain, and France, and in men in Nauru. The lowest prevalence in the

world in 2022 was in western Europe and east Africa for both sexes, and in Japan and Canada for women, and the highest prevalence in the world in 2022 was in countries in Polynesia and Micronesia, some countries in the Caribbean and the Middle East and north Africa, as well as Pakistan and Malaysia. In 2022, 445 million (95% CrI 401–496) adults aged 30 years or older with diabetes did not receive treatment (59% of adults aged 30 years or older with diabetes), 3.5 times the number in 1990. From 1990 to 2022, diabetes treatment coverage increased in 118 countries for women and 98 countries for men with a posterior probability of more than 0.80. The largest improvement in treatment coverage was in some countries from central and western Europe and Latin America (Mexico, Colombia, Chile, and Costa Rica), Canada, South Korea, Russia, Seychelles, and Jordan. There was no increase in treatment coverage in most countries in sub-Saharan Africa; the Caribbean; Pacific island nations; and south, southeast, and central Asia. In 2022, age-standardised treatment coverage was lowest in countries in sub-Saharan Africa and south Asia, and treatment coverage was less than 10% in some African countries. Treatment coverage was 55% or higher in South Korea, many high-income western countries, and some countries in central and eastern Europe (eg, Poland, Czechia, and Russia), Latin America (eg, Costa Rica, Chile, and Mexico), and the Middle East and north Africa (eg, Jordan, Qatar, and Kuwait).

**Interpretation**—In most countries, especially in low-income and middle-income countries, diabetes treatment has not increased at all or has not increased sufficiently in comparison with the rise in prevalence. The burden of diabetes and untreated diabetes is increasingly borne by low-income and middle-income countries. The expansion of health insurance and primary health care should be accompanied with diabetes programmes that realign and resource health services to enhance the early detection and effective treatment of diabetes.

**Funding**—UK Medical Research Council, UK Research and Innovation (Research England), and US Centers for Disease Control and Prevention.

## Introduction

Diabetes increases the risk of debilitating complications such as amputation, vision loss, and renal failure, and is associated with cardiovascular disease, dementia, some cancers, and infections such as tuberculosis and severe COVID-19. Diabetes can be detected at the primary health-care level, and treatment with oral hypoglycaemic drugs or insulin, as well as newer injectable medicines, reduces the risk of, and slows progression to, complications and sequelae.<sup>1,2</sup> Failure to treat or delay in treatment increases the risk of complications and death. Therefore, diabetes prevalence and diabetes treatment coverage, and how they have changed, are important measures of population health and the performance of health systems.

Obesity, which is an important risk factor for diabetes, has increased in most countries in the past few decades, with the largest increases seen in low-income and middle-income countries.<sup>3</sup> At the same time, several effective medicines for diabetes (eg, metformin) are now off patent and available at a relatively low cost in most countries,<sup>4,5</sup> and pharmacological treatment is recommended alongside diet and lifestyle change to manage diabetes.<sup>1,6–9</sup> Comparable data on diabetes prevalence and treatment coverage across countries can help identify good practices in the prevention and treatment of diabetes and

guide health system priorities and programmes. Current global data on diabetes prevalence estimates have several limitations, and there are few data on the coverage of treatment for diabetes, and especially on how it has changed. We present global estimates of trends in diabetes prevalence and treatment from 1990 to 2022.

## Methods

### Overview

We pooled population-based studies with measurements of fasting glucose and glycated haemoglobin (HbA<sub>1c</sub>). Pooled data were analysed using a Bayesian hierarchical meta-regression model. Our primary outcomes were the prevalence of diabetes and the proportion of people with diabetes who were treated for diabetes. Diabetes was defined as taking medication for diabetes (treated diabetes), or having a fasting plasma glucose (FPG) of 7.0 mmol/L or more or an HbA<sub>1c</sub> of 6.5% or more (untreated diabetes). Treatment was defined as the current use of oral hypoglycaemic drugs or insulin in people with diabetes.

We estimated trends from 1990 to 2022 in the primary outcomes for 200 countries and territories, which were divided into 20 regions and eight super-regions (appendix p 69). We estimated diabetes prevalence for women and men aged 18 years and older, and treatment for those aged 30 years and older. We used different age groups for prevalence and treatment because the relatively small number of participants with diabetes aged 18–29 years results in frequent zero or very small denominators and unstable estimates of treatment in these age ranges. All analyses were performed in R (version 4.3.1).

### Data

We pooled population-based studies with measurements of fasting glucose and HbA<sub>1c</sub> from a database collated by the NCD Risk Factor Collaboration (NCD-RisC). Details of data sources, cleaning, and management are provided in the appendix (pp 27–32). We used 1108 studies conducted from 1980 to 2022 with 141 million participants aged 18 years or older (appendix pp 49–68). These studies measured fasting glucose, HbA<sub>1c</sub>, or both, as described in the appendix (pp 27–32). We had at least one study for 175 (88%) of the 200 countries for which estimates were made (appendix pp 74–75). Countries in the high-income western super-region (with an average of 12.3 studies per country) and the east and southeast Asia and the Pacific super-region (with an average of 11.5 studies per country) had the most data, and those in sub-Saharan Africa (1.8 studies per country) and Pacific island nations (2.8 studies per country) had the least data. Other super-regions had on average from 3.2 to 10.4 studies per country (appendix pp 76–77). 833 (75%) of these studies had data on treatment and the other 275 (25%) did not. The studies without treatment data were of two types: those that did not collect treatment data or did not separate pharmacological and lifestyle interventions, and the studies that were extracted from reports or obtained via a previous global data pooling study as detailed in the appendix (pp 27–32).

## Statistical methods for analysis of pooled data

We used a Bayesian hierarchical meta-regression model to estimate trends in diabetes prevalence and treatment by sex, age, country, and year. The statistical methods are detailed in previous publications<sup>3,10</sup> and in the appendix (pp 33–47).

Age-standardised prevalence and treatment were calculated by weighting age-specific estimates using the WHO standard population. When calculating age-standardised treatment, we also accounted for the age pattern of diabetes prevalence by multiplying the WHO standard population weights with age-specific diabetes prevalence in each country and year, because the denominator of treatment was only people with diabetes.

All calculations were done at the posterior draw level. The reported 95% credible intervals (CrIs) represent the 2.5–97.5th percentiles of the posterior distributions. We obtained the posterior probability that an estimated change represented a true increase as the proportion of draws from the posterior distribution that had an increase. The results section presents the number of countries where prevalence or treatment changed with a posterior probability of more than 0.80, as an indication of probable changes in population health (prevalence) and health system response (treatment). The number of countries with an increase or decrease would be fewer if a stricter threshold (eg, 0.90) were used.

We decomposed the change over time in the number of people with untreated diabetes to calculate the contributions of three drivers: change in population size and age structure, change in prevalence, and change in treatment coverage. Decomposition was done using the basic algebraic relationship of these components (appendix p 48).

## Secondary analysis of diabetes diagnosis

In a secondary analysis, we used data from studies conducted from 2005 to 2022 that were representative of countries as a whole or one or more subnational regions. We used data from participants aged 30 years or older to calculate the proportion of those with untreated diabetes who did not receive a diagnosis, accounting for sample weights as stated in the appendix (pp 27–32). We combined data across studies through weighting by their respective sample sizes for eight super-regions, presented in the appendix (p 69). We did this secondary analysis to evaluate whether the extent of under-treatment of diabetes was due to under-diagnosis, or due to under-treatment among those with a diagnosis. Consistent with the previous NCD-RisC analysis of hypertension,<sup>10</sup> we only considered participants who answered yes to the diagnosis question as having (diagnosed) diabetes if they used treatment or had elevated FPG or HbA<sub>1c</sub> (ie, those who were not using treatment and had below-threshold levels of FPG and HbA<sub>1c</sub> were not counted as having diabetes). We did this so that we did not overestimate the prevalence or extent of diagnosis, because in some studies the question used to elicit diagnosis information combined diabetes with prediabetes or past gestational diabetes.

## Role of the funding source

The funders of the study had no role in study design, data collection, data analysis, data interpretation, or writing of the report.

## Results

The results of this study can be explored using visualisations and downloaded from the [NCD-RisC](#) website. In 1990, diabetes prevalence was lowest throughout Europe compared with countries in other super-regions for both sexes and in sub-Saharan Africa for men (figure 1). The age-standardised prevalence of diabetes was 2–4% in 16 countries for women and in 22 for men, with Denmark having the lowest prevalence for both sexes, followed by Sweden for women and Rwanda for men. The age-standardised prevalence was 20–31% in some Pacific island nations (Nauru, Marshall Islands, Tokelau, and Cook Islands for both sexes, and Samoa for men) in 1990.

Age-standardised prevalence decreased from 1990 to 2022 with a posterior probability of more than 0.80 by 1–2 percentage points in women in Japan, Spain, and France,<sup>11–13</sup> countries where women also had a declining or flat trend in obesity over this period,<sup>3</sup> and by 7 percentage points in men in Nauru, albeit from a high 1990 prevalence of 30.7% (95% CrI 25.4–36.1; figures 1 and 2). Neither an increase nor a decrease in prevalence was detected at a posterior probability of 0.80 among women in 66 countries and men in 44 countries. Most of these countries were in western Europe (eg, Denmark and the Netherlands), sub-Saharan Africa (eg, Ethiopia and Malawi), east Asia and the Pacific (eg, Singapore), and Canada, as well as many island nations in Polynesia and Micronesia, where prevalence was already high in 1990. In the other 131 countries for women and 155 for men, age-standardised diabetes prevalence increased with a posterior probability of more than 0.80. The increase ranged 2–22 percentage points in women and 2–18 in men. The countries with the smallest increase were in Europe and sub-Saharan Africa (where many other countries did not have an increase with a posterior probability of more than 0.80) and Timor-Leste, as well as Japan (in men, with women having a decline as stated earlier). The largest increases, ranging 15–22 percentage points, was in a belt of countries north of the equator extending from southeast Asia (eg, Malaysia), to south Asia (eg, Pakistan), the Middle East and north Africa (eg, Egypt), and Latin America and the Caribbean (eg, Jamaica, Trinidad and Tobago, and Costa Rica). Prevalence also increased by a large amount in other Pacific islands such as Federated States of Micronesia and Vanuatu. In relative terms, age-standardised prevalence more than doubled in 66 countries for women and 79 for men from 1990 to 2022 (appendix pp 82–83).

Diabetes prevalence in 2022 was still lowest in western Europe and east Africa for both sexes, and in Japan and Canada for women. The age-standardised prevalence in 2022 was 2–4% for women in France, Denmark, Spain, Switzerland, and Sweden, and 3–5% for men in Denmark, France, Uganda, Kenya, Malawi, Spain, and Rwanda (figure 2). At the other end, the age-standardised prevalence among women in 21 countries and men in 14 countries surpassed 25% in 2022. These high-prevalence countries included most countries in Polynesia and Micronesia, some countries in the Caribbean (eg, Trinidad and Tobago, and Jamaica) and in the Middle East and north Africa (eg, Egypt), Pakistan, and Malaysia.<sup>14,15</sup>

In 2022, the crude prevalence was higher than age-standardised in high-income western countries, central and eastern Europe, east Asia and the Pacific, and parts of Latin America and the Caribbean (appendix pp 86–87). It was lower in sub-Saharan Africa, south Asia, and

most countries in southeast Asia and central Asia, and the Middle East and north Africa. This difference occurs because of a combination of two factors: prevalence of diabetes increases with age, and the age of the actual population is older than that of the WHO standard population in high-income western countries, central and eastern Europe, east Asia and the Pacific, and parts of Latin America and the Caribbean, and younger in sub-Saharan Africa, south Asia, and most countries in southeast Asia and central Asia, and the Middle East and north Africa. The median age of people with diabetes was younger than 40 years in some countries in sub-Saharan Africa, and 40–45 years elsewhere in Africa and in some countries in central Asia, south Asia, the Middle East and north Africa, and the Caribbean; in most countries in the high-income western super-region and some countries in east Asia and the Pacific, the median age was older than 65 years (appendix pp 88–89). In 2022, diabetes prevalence was higher in men than women in most high-income western countries (appendix pp 84–85). It was the opposite in most countries in sub-Saharan Africa and Latin America and the Caribbean. In other super-regions, diabetes prevalence was similar or there was a mix of higher and lower female prevalence across countries.

In 2022, age-standardised diabetes prevalence in the world was 13.9% (95% CrI 12.3–15.8) for women and 14.3% (12.5–16.4) for men. An estimated 828 million (95% CrI 757–908) adults had diabetes, a substantial increase of 630 million (554–713) from 1990 (figure 3; appendix p 70). Of these, 420 million (372–473) were women and 408 million (356–467) were men. India (212 million, 175–250) and China (148 million, 103–202) accounted for the largest proportion of this number, followed by the USA, Pakistan, Indonesia, and Brazil.

In 1990, age-standardised diabetes treatment coverage was less than 50% in all except 11 countries for women and one for men. Age-standardised treatment coverage increased in 118 countries (59%) for women and 98 (49%) for men with a posterior probability of more than 0.80 from 1990 to 2022. Some of the largest improvements (25–37 percentage points) were observed in countries in Latin America (ie, Mexico, Colombia, Chile, Costa Rica, and Brazil), central and western Europe (eg, Netherlands, Finland, and Croatia), Canada, South Korea, Russia, Seychelles, and Jordan for one or both sexes (figure 2). Neither an increase nor a decrease was detected in treatment at a posterior probability of 0.80 in 82 countries for women and 101 for men, including most countries in sub-Saharan Africa; the Caribbean; south, southeast, and central Asia; and Pacific island nations. Age-standardised treatment coverage declined slightly in men in Jamaica with a posterior probability of more than 0.80.

As a result of these trends, the gap between the countries with the highest and lowest treatment coverage widened from 56 and 43 percentage points in women and men, respectively, in 1990, to 78 and 71 percentage points in women and men, respectively, in 2022 (figure 4). The difference in treatment coverage also increased between the high-income western super-region, where treatment coverage was highest, and Pacific island nations, south Asia, and sub-Saharan Africa, where it was lowest. In 2022, age-standardised treatment coverage was 5–10% in a few countries in sub-Saharan Africa (eg, Burkina Faso, Angola, Niger, Liberia, and Benin) for one or both sexes. Treatment coverage was less than 25% in Haiti, most countries in sub-Saharan Africa, and some countries in Melanesia (ie, Vanuatu, Solomon Islands, Papua New Guinea, and Fiji), central Asia (ie, Turkmenistan, Mongolia, and Tajikistan), south Asia (eg, Bangladesh, Bhutan, and Nepal),<sup>16</sup> and southeast

Asia (ie, Timor-Leste, Indonesia, and the Philippines) for one or both sexes. Treatment was 55% or higher in South Korea, many high-income western countries, and some countries in central and eastern Europe (eg, Poland, Czechia, and Russia), Latin America (eg, Costa Rica,<sup>17</sup> Chile, and Mexico), and the Middle East and north Africa (eg, Jordan,<sup>18</sup> Qatar, and Kuwait). The highest age-standardised treatment coverage was 86% (95% CrI 74–95) for women and 77% (60–89) for men in Belgium (figure 2). Crude and age-standardised treatment estimates were similar (appendix pp 86–87). In 2022, diabetes treatment coverage was higher in women than men in most high-income western countries and countries in Latin America and the Caribbean (appendix pp 84–85). It was the opposite in most countries in sub-Saharan Africa. In other super-regions, treatment was similar between women and men, or there were some countries with higher treatment in women than men and vice versa.

A total of 445 million (95% CrI 401–496) adults aged 30 years or older with diabetes were not treated with oral hypoglycaemic drugs nor insulin (59% of those with diabetes), 3·5 times the number in 1990 (129 million, 112–147; figure 5). 30% of those with untreated diabetes (133 million, 109–160) were in India, more than 50% greater than the next largest number of people with untreated diabetes, which was in China (78 million, 51–112; figure 3), because treatment coverage was higher in China than in India. Similarly, Pakistan (24 million, 16–31) and Indonesia (18 million, 12–25), the countries with the next two largest number of untreated diabetes, had a higher number of people with untreated diabetes than the USA (13 million, 9–18), which had higher treatment coverage.

The number of people with untreated diabetes increased in every super-region from 1990 to 2022 (figure 5). The largest contributor to this rise was the increase in the size and age of population, because diabetes is more prevalent in older age groups. The exception was central and eastern Europe, where the population size grew less than in other super-regions or decreased in some countries (eg, Romania and Bulgaria). In other super-regions, population change accounted for 61–83% of the increase in untreated diabetes cases, and rise in diabetes prevalence accounted for 15–42% of the increase in untreated diabetes cases (figure 5). In high-income western countries, followed by central and eastern Europe, Latin America, and east Asia and the Pacific, the rise in the number of people with diabetes was countered to some extent by the improvement in treatment (figure 5).

In every super-region, most people (84–97%) with untreated diabetes had not received a diagnosis (table). In sub-Saharan Africa and south Asia, more than 94% of untreated diabetes cases were undiagnosed.

## Discussion

Our results show an expanding inequity of diabetes in the world: the largest increases in prevalence have occurred in low-income and middle-income countries, whereas the improvements in treatment were largest in high-income and industrialised nations in Europe, north America, Australasia, and the Pacific, and some well performing middle-income nations and emerging economies, especially those in Latin America. These trends have widened the global gap in diabetes prevalence and treatment, with an increasing share of

people with diabetes, especially with untreated diabetes, living in low-income and middle-income countries.

The estimated prevalence of diabetes in our work is higher than other recent global studies<sup>19,20</sup> (appendix p 71). Beyond methodological differences in how data were pooled and analysed, there are three key reasons for this difference: first, we included people whose FPG or HbA<sub>1c</sub> were elevated whereas previous studies mostly relied on elevated FPG or other single-biomarker data.<sup>19,20</sup> Our approach to defining diabetes is consistent with current clinical guidelines and practice,<sup>6–9,21–24</sup> and avoids leaving out people whose HbA<sub>1c</sub> is elevated but have an FPG of less than 7.0 mmol/L. This inclusiveness has a larger effect on prevalence in south Asia, because compared with using both FPG and HbA<sub>1c</sub>, FPG alone misses more cases of diabetes in south Asia than other regions.<sup>25–27</sup> Second, this difference might arise from whether and how self-report or registry data were used: such data were not used in our analyses because some people do not have a previous diagnosis, and hence are neither aware of their diabetes nor appear in a registry, and used in previous studies as described in those studies<sup>19,20</sup> and summarised earlier in this paper. Third, data used in our analysis were more recent than those in other global analyses (appendix pp 72–73). With rising prevalence, newer data better captures contemporary prevalence. For example, both Sun and colleagues<sup>19</sup> and the GBD Diabetes Collaborators<sup>20</sup> used data from early (before 2015) rounds of the ICMR-INDIAB surveys from India, which only covered a small number of states, mostly in low-prevalence regions of the country, whereas we used all six rounds up to 2020, which covered the entire nation and a more recent time period,<sup>26</sup> as well as an additional national survey from 2018.

Our prevalence estimates are consistent with country studies that used both fasting glucose and HbA<sub>1c</sub>.<sup>26,28–32</sup> For example, our estimated prevalence for India is similar to that of the ICMR-INDIAB surveys<sup>26</sup> when both blood glucose and HbA<sub>1c</sub> are used, which is higher than prevalence based on glucose alone. National surveys from other countries in south Asia, for example Pakistan and Sri Lanka,<sup>14,33</sup> also show high prevalence when using both FPG and HbA<sub>1c</sub>. This occurs because studies from south Asian countries have consistently found many people with diabetes present with isolated elevated HbA<sub>1c</sub>.<sup>25–27,34</sup> Our results that diabetes prevalence did not increase, or increased only by a small amount, in some high-income countries, are consistent with reports from Spain, France, Switzerland, Germany, Sweden, Japan, and Taiwan, which showed flat or decreasing trends in prevalence in one or both sexes.<sup>11–13,35–38</sup> These results are also consistent with evidence on the decline in diabetes incidence in high-income countries,<sup>39</sup> because prevalence depends on the combination of incidence and survival of those with diabetes.

Our study presented comprehensive, consistent, and comparable global estimates of diabetes prevalence and treatment over a period in which risk factors such as obesity changed substantially, and the benefits of treatment were established and incorporated in clinical guidelines. A key strength of this work is the scale and quality of data, which were checked and harmonised in a rigorous and systematic process. We used data from more than 1100 studies in 175 countries, covering 98% of the world's population. We used only data from studies that had measured glycaemic markers to avoid bias and other errors in self-reported and registry data due to undiagnosed cases. We reanalysed data according to

a standardised protocol, and the characteristics and quality of data in relation to sampling and measurement methods were verified through repeated checks. We defined diabetes on the basis of both FPG and HbA<sub>1c</sub>, bringing global estimates of diabetes into harmony with contemporary clinical guidelines.<sup>6–9,21–24</sup> This remedies the limitation of previous global estimates in terms of excluding people who have isolated elevated HbA<sub>1c</sub>, who make up a larger proportion of total diabetes in low-income and middle-income countries than high-income countries.<sup>25</sup> We used a statistical model that accounted for important features of diabetes prevalence and treatment data, including non-linear time trends and age associations and difference in trends between younger and older adults, and gave more weight to national data than to non-national sources. The model fitted the data well, with median difference (which measures bias) between the model fit and national data that covered entire countries being 0·1 percentage points for diabetes prevalence, and –0·8 and –0·6 percentage points for treatment for women and men, respectively. Median absolute difference (which measures non-systematic or random deviation) was 1·5 and 1·7 percentage points for diabetes prevalence, and 6·1 and 5·9 percentage points for treatment for women and men, respectively.

Our study has limitations that affect global analyses that pool data collected in different countries and time periods. Some countries had fewer data and 25 had no data; the estimates for countries with fewer or no data were informed to a stronger degree by data from other countries through geographical hierarchy, which increased the uncertainty of their estimates. Nonetheless, the estimated global prevalence and treatment coverage are virtually identical between using countries with data versus using all countries. Health survey participation rate varies across countries and can change over time, and has become particularly low in Europe. Survey sample weights adjust for non-response but this adjustment might be imperfect, especially as response rates decrease. This issue shows the need to improve the public trust and motivation for participation in health surveys, and to consider alternative surveillance platforms such as routine primary care data, where access and use is high. Although we accounted for whether a study had measured fasting glucose in plasma or whole blood, other unobserved differences might persist due to differing methods—for example, in assays used for measuring FPG and HbA<sub>1c</sub>. The other differences are captured by study-specific random-effect terms in our model that adjust for unobserved differences across studies.

We did not include the 2-h postprandial glucose from an oral glucose tolerance test (2hOGTT) in our definition of diabetes. This is because its use in contemporary clinical practice and population surveillance is rare, due to the inconvenience related to the glucose load, 2-h time frame, and the two blood draws required for the test. If some people with an elevated 2hOGTT are not captured by the combination of FPG and HbA<sub>1c</sub>, the actual prevalence of diabetes would be higher than reported here. HbA<sub>1c</sub> can be affected by some non-glycaemic factors, including anaemia due to iron deficiency or malaria, specific haemoglobin variants (eg, HbS and HbF), other haemoglobinopathies, polycythaemia due to living in high altitude, liver and kidney diseases, HIV, and specific drugs such as antiretroviral therapy for HIV. Some of these factors, including malaria-induced and iron deficiency anaemia, haemoglobinopathies such as sickle cell disease and thalassemia, and antiretroviral therapy, are more prevalent in parts of Asia and Africa than other parts of

the world, and might have affected HbA<sub>1c</sub> or its measurement. In clinical practice, diabetes diagnosis for those with these conditions might need to be accompanied by a glucose test before decisions about treatment or further testing are made.<sup>6–9,21–24</sup> Furthermore, in studies that did not measure HbA<sub>1c</sub>, the prevalence of isolated elevated HbA<sub>1c</sub> was predicted with equations that used the relationship between HbA<sub>1c</sub>, FPG, and other predictors in studies that had measured both (and vice versa for FPG when it was not measured).<sup>25</sup> Although these equations performed well in cross-validation,<sup>25</sup> their use increases the uncertainty of our estimates. Most survey data did not separate type 1 and type 2 diabetes in adults because distinguishing between these disorders can be challenging in adults. However, most (85–95%) cases of diabetes in adults are type 2.<sup>40</sup> Most health surveys are based on one visit to participants, in which a glycaemic marker is measured. Many clinical guidelines recommend using a second confirmatory test for diabetes diagnosis and initiating treatment,<sup>6,21–23</sup> although there is variation in this guidance. A key reason for a confirmatory test is to minimise risks of erroneous results—for example, due to the misrecording of laboratory results—potentially leading to a lifelong misdiagnosis for an individual patient. This is not a relevant issue in prevalence studies in a population, and hence population surveillance uses a single measurement. Nonetheless, diabetes prevalence based on data collected in multiple visits might be lower, and treatment coverage might be higher, than that based on one measurement. The COVID-19 pandemic might have impeded the rolling out of some health surveys or affected participation. The pandemic might also have affected diabetes prevalence and especially treatment coverage. We used 45 studies from 2020 and later, but additional data are needed to evaluate the population-level effects. We had insufficient comparable data on treatment details such as the use of insulin and specific medicines because these data are not consistently collected in population-representative surveys. Complementing survey data with data from health facilities or prescriptions could provide such clinically relevant details, which is especially important as new effective diabetes medicines become available. Future studies should complement our work on adults with estimates of diabetes prevalence and treatment in children and adolescents, noting that blood-based measurements in health surveys are less common in children and adolescents than in adults.

An important driver of the rise in diabetes, and its variation across countries, is obesity.<sup>3</sup> Diabetes was either already high or increased more in some of the regions where obesity was or became prevalent, such as Pacific and Caribbean island nations and the Middle East and north Africa, compared with high-income countries in Europe and east Asia and the Pacific, where obesity and diabetes did not rise or rose by a relatively small amount.<sup>3</sup> In addition to obesity, the consumption of specific foods might influence the risk of diabetes.<sup>41</sup> For example, yogurt and possibly some other forms of dairy, whole grains, and green leafy vegetables reduce the risk of diabetes,<sup>42–44</sup> whereas refined carbohydrates, including in sugar-sweetened beverages, increase this risk.<sup>41,45–47</sup> In countries with universal health insurance and good access to primary care, people at a high risk of diabetes might also be identified early and advised to use a combination of diet and lifestyle modifications and medicines to prevent or delay diabetes onset.<sup>48–55</sup> This approach is less widely used in low-resourced health systems with limited attention to, or resources for, diabetes screening. Genetic and phenotypic differences due to foetal and childhood nutrition and growth also

influence worldwide variations, especially when accompanied with rapid weight gain—for example the high diabetes prevalence in south Asia.<sup>56,57</sup>

Given the disabling and fatal consequences of diabetes, preventing its onset and delaying its complications through improving diet and treatment are essential for better population health throughout the world. Curbing and reversing the rise in obesity, and improving the quality of diet, require both regulations and taxes to reduce the intake of foods such as refined carbohydrates that lead to weight gain, and improving financial and physical access to healthier foods, such as fresh fruits, vegetables, legumes, dairy and fish, and to sports and active leisure.<sup>3</sup> Improving affordability and accessibility of healthy foods and sports is particularly important for poorer families and marginalised communities, and requires measures such as targeted cash transfers, subsidies or vouchers for healthy foods and sports facilities, and free healthy school meals.<sup>3</sup> Alongside these population-based measures, diet and lifestyle modification and medicines in people at a high risk of diabetes (including those with prediabetes) can prevent or delay diabetes onset and reduce the risk of some complications.<sup>48–55</sup> High-risk prevention requires identifying such people, and supporting them to achieve sustained changes in diet and exercise and to use effective medicines. This in turn requires health systems that facilitate regular contact with primary care providers, screening, access to healthy foods and pharmacological interventions, and monitoring and follow-ups to ensure compliance and to further adjust interventions.

For people who already have diabetes, lifestyle modification and pharmacological treatment, as well as blood pressure and cholesterol control, can delay progression to complications and reduce mortality, or even help with remission, especially if started early.<sup>1,2,58–62</sup> Our results show that treatment coverage varies substantially globally, and is low in most low-income and middle-income countries. We also found that the current variations in treatment were largely related to the extent of diabetes under-diagnosis, which means that improving case detection is a prerequisite to increasing treatment coverage. Improving the detection of diabetes requires facilitating regular contact with health services and care providers as well as programmes that enhance screening. Universal insurance is essential for higher care access and use but, to improve diagnosis of diabetes, it should be accompanied with expanding as well as redesigning primary care towards diabetes and other long-term conditions that are initially asymptomatic.<sup>63</sup> Such actions are especially important in regions with younger populations and lower average age of diabetes, because health system contact tends to be lower for young adults. Adaptation of primary care for more screening requires approaches such as extended or flexible hours for people in employment, workplace and community screening programmes and campaigns, integration with screening and care for diseases such as HIV and AIDS and tuberculosis, which have well established programmes, and the use of non-physician health providers.<sup>17,61,63–71</sup> Increasing diagnosis also requires guidelines, training, and decision support tools to encourage diabetes screening, and the availability of laboratory facilities or point-of-care monitors. To improve treatment coverage, diagnosed diabetes cases need financial and physical access to a regular supply of medicines, information and support to adhere to treatment, and follow-up visits to evaluate control and screen for complications. Universal insurance is also important for treatment but should be accompanied with the inclusion of diabetes medicines as essential medicines covered through insurance; national or multi-country strategies for accessing medicines at

lower costs, as done for HIV and AIDS; an efficient procurement and distribution system that ensures an uninterrupted supply of medicine, guidelines, training, and decision support to encourage and facilitate prescription; and information and support systems via digital technologies or community health workers to improve patient adherence.<sup>61,64,69,72,73</sup> These factors show the need to go beyond universal insurance alone, and to have national diabetes programmes that leverage and adapt universal insurance and primary care expansion to address the burden of diabetes.<sup>17,63,64,74</sup> With new diabetes medicines and technologies such as continuous glucose monitoring now available in high-income countries, such actions are particularly essential to avoid widening the global inequalities in diabetes burden and treatment.

## Supplementary Material

Refer to Web version on PubMed Central for supplementary material.

## Acknowledgments

This study was funded by the UK Medical Research Council (grant number MR/V034057/1), the UK Research and Innovation (Research England Policy Support Fund), and the US Centers for Disease Control and Prevention. BZ is supported by a fellowship from the Abdul Latif Jameel Institute for Disease and Emergency Analytics at Imperial College London, funded by a donation from Community Jameel. The authors alone are responsible for the views expressed in this Article and they do not necessarily represent the views, decisions, or policies of the institutions with which they are affiliated.

Editorial note: The Lancet Group takes a neutral position with respect to territorial claims in published maps and institutional affiliations.

## Data sharing

The input data are available at <https://www.ncdrisc.org> and Zenodo (<https://doi.org/10.5281/zenodo.13987398>), where permitted by data governance and sharing arrangements; contact information are provided for other data sources in the same file. The computer code is also available from the same sites. The results of this study can be downloaded from <https://www.ncdrisc.org>.

## References

1. ElSayed NA, Aleppo G, Bannuru RR, et al. 9. Pharmacologic approaches to glycemic treatment: standards of care in diabetes-2024. *Diabetes Care*. 2024; 47 (suppl 1) S158–78. DOI: 10.2337/dc24-er07a [PubMed: 38078590]
2. Adler AI, Coleman RL, Leal J, Whiteley WN, Clarke P, Holman RR. Post-trial monitoring of a randomised controlled trial of intensive glycaemic control in type 2 diabetes extended from 10 years to 24 years (UKPDS 91). *Lancet*. 2024; 404: 145–55. [PubMed: 38772405]
3. NCD Risk Factor Collaboration (NCD-RisC). Worldwide trends in underweight and obesity from 1990 to 2022: a pooled analysis of 3663 population-representative studies with 222 million children, adolescents, and adults. *Lancet*. 2024; 403: 1027–50. DOI: 10.1016/S0140-6736(23)02750-2 [PubMed: 38432237]
4. Babar ZU, Ramzan S, El-Dahiyat F, Tachmazidis I, Adebisi A, Hasan SS. The availability, pricing, and affordability of essential diabetes medicines in 17 low-, middle-, and high-income countries. *Front Pharmacol*. 2019; 10 1375 doi: 10.3389/fphar.2019.01375 [PubMed: 31824316]

5. Chow CK, Ramasundarahettige C, Hu W, et al. Availability and affordability of essential medicines for diabetes across high-income, middle-income, and low-income countries: a prospective epidemiological study. *Lancet Diabetes Endocrinol.* 2018; 6: 798–808. [PubMed: 30170949]
6. Cosentino F, Grant PJ, Aboyans V, et al. 2019 ESC Guidelines on diabetes, pre-diabetes, and cardiovascular diseases developed in collaboration with the EASD. *Eur Heart J.* 2020; 41: 255–323. [PubMed: 31497854]
7. CENETEC. Prevención, diagnóstico, tratamiento inicial, metas de control ambulatorio y referencia oportuna de la diabetes mellitus tipo 2 en el primer nivel de atención. Guía de Evidencias y Recomendaciones: Guía de Práctica Clínica. 2019. accessed June 5, 2024 <https://www.cenetec-difusion.com/CMGPC/GPC-SS-093-19/ER.pdf>
8. SEMDSA Type 2 Diabetes Guidelines Expert Committee. SEMDSA 2017 guidelines for the management of type 2 diabetes mellitus. *J Endocrinol Metab Diabetes South Africa.* 2017; 22 (suppl 1) S1–196.
9. Makkar BM, Kumar CV, Saboo B, Agarwal S. RSSDI clinical practice recommendations for the management of type 2 diabetes mellitus 2022. *Int J Diabetes Dev Ctries.* 2022; 42: 1–143. DOI: 10.1007/s13410-018-0604-7 [PubMed: 29527102]
10. NCD Risk Factor Collaboration (NCD-RisC). Worldwide trends in hypertension prevalence and progress in treatment and control from 1990 to 2019: a pooled analysis of 1201 population-representative studies with 104 million participants. *Lancet.* 2021; 398: 957–80. DOI: 10.1016/S0140-6736(21)01330-1 [PubMed: 34450083]
11. Ikeda N, Nishi N, Noda H, Noda M. Trends in prevalence and management of diabetes and related vascular risks in Japanese adults: Japan National Health and Nutrition Surveys 2003-2012. *Diabetes Res Clin Pract.* 2017; 127: 115–22. [PubMed: 28365558]
12. López Rey MJ, Docampo García M. Change over time in prevalence of diabetes mellitus (DM) in Spain (1999-2014). *Endocrinol Diabetes Nutr (Engl Ed).* 2018; 65: 515–23. [PubMed: 30078493]
13. Fuentes S, Mandereau-Bruno L, Regnault N, et al. Is the type 2 diabetes epidemic plateauing in France? A nationwide population-based study. *Diabetes Metab.* 2020; 46: 472–79. [PubMed: 31923577]
14. Basit A, Fawwad A, Qureshi H, Shera AS. Prevalence of diabetes, pre-diabetes and associated risk factors: second National Diabetes Survey of Pakistan (NDSP), 2016–2017. *BMJ Open.* 2018; 8 e020961 doi: 10.1136/bmjopen-2017-020961 [PubMed: 30082350]
15. National Institutes of Health, Ministry of Health Malaysia. [accessed June 7, 2024] National Health and Morbidity Survey 2019, technical report—volume I, NCDs—non-communicable diseases: risk factors and other health problems. [https://iptk.moh.gov.my/images/technical\\_report/2020/Report\\_NHMS2019-NCD.pdf](https://iptk.moh.gov.my/images/technical_report/2020/Report_NHMS2019-NCD.pdf)
16. Islam MT, Bruce M, Alam K. Cascade of diabetes care in Bangladesh, Bhutan and Nepal: identifying gaps in the screening, diagnosis, treatment and control continuum. *Sci Rep.* 2023; 13 10285 doi: 10.1038/s41598-023-37519-w [PubMed: 37355725]
17. Chen Ku CH, Chen-Sandi D. The health system in Costa Rica: focus on the management of diabetes mellitus. *Cureus.* 2023; 15 e40084 doi: 10.7759/cureus.40084 [PubMed: 37425606]
18. Saadeh R, Alsmadi H, Batieha A, et al. Quality of care for type 2 diabetes in Jordan: a national study. *Med Int (Lond).* 2023; 3: 27. doi: 10.3892/mi.2023.87 [PubMed: 37323128]
19. Sun H, Saeedi P, Karuranga S, et al. IDF Diabetes Atlas: global, regional and country-level diabetes prevalence estimates for 2021 and projections for 2045. *Diabetes Res Clin Pract.* 2022; 183 109119 doi: 10.1016/j.diabres.2021.109119 [PubMed: 34879977]
20. GBD 2021 Diabetes Collaborators. Global, regional, and national burden of diabetes from 1990 to 2021, with projections of prevalence to 2050: a systematic analysis for the Global Burden of Disease Study 2021. *Lancet.* 2023; 402: 203–34. DOI: 10.1016/S0140-6736(23)01301-6 [PubMed: 37356446]
21. ElSayed NA, Aleppo G, Bannuru RR, et al. 2. Diagnosis and classification of diabetes: standards of care in diabetes—2024. *Diabetes Care.* 2024; 47 (suppl 1) S20–42. DOI: 10.2337/dc24-S002 [PubMed: 38078589]
22. WHO. Classification of diabetes mellitus. 2019. accessed May 31, 2024 <https://iris.who.int/bitstream/handle/10665/325182/9789241515702-eng.pdf>

23. International Diabetes Federation. IDF clinical practice recommendations for managing type 2 diabetes in primary care. 2017. accessed May 31, 2024 <https://idf.org/media/uploads/2023/05/attachments-63.pdf>
24. Chinese Diabetes Society. Guideline for the prevention and treatment of type 2 diabetes mellitus in China (2020 edition). *Zhonghua Neifenmi Daixie Zazhi*. 2021; 37: 311–98.
25. NCD Risk Factor Collaboration (NCD-RisC). Global variation in diabetes diagnosis and prevalence based on fasting glucose and hemoglobin A1c. *Nat Med*. 2023; 29: 2885–901. DOI: 10.1038/s41591-023-02610-2 [PubMed: 37946056]
26. Anjana RM, Unnikrishnan R, Deepa M, et al. Metabolic non-communicable disease health report of India: the ICMR-INDIAB national cross-sectional study (ICMR-INDIAB-17). *Lancet Diabetes Endocrinol*. 2023; 11: 474–89. [PubMed: 37301218]
27. Gujral UP, Prabhakaran D, Pradeepa R, et al. Isolated HbA1c identifies a different subgroup of individuals with type 2 diabetes compared to fasting or post-challenge glucose in Asian Indians: the CARRS and MASALA studies. *Diabetes Res Clin Pract*. 2019; 153: 93–102. DOI: 10.1016/j.diabres.2019.05.026 [PubMed: 31150721]
28. Wang L, Li X, Wang Z, et al. Trends in prevalence of diabetes and control of risk factors in diabetes among US adults, 1999–2018. *JAMA*. 2021; 326: 1–13. DOI: 10.1001/jama.2021.9883 [PubMed: 34170288]
29. Menke A, Casagrande S, Geiss L, Cowie CC. Prevalence of and trends in diabetes among adults in the United States, 1988–2012. *JAMA*. 2015; 314: 1021–29. [PubMed: 26348752]
30. Basto-Abreu AC, Lopez-Olmedo N, Rojas-Martinez R, et al. Prevalence of diabetes and glycemic control in Mexico: national results from 2018 and 2020. *Salud Publica Mex*. 2021; 63: 725–33. [PubMed: 35099912]
31. Jeon JY, Ko SH, Kwon HS, et al. Prevalence of diabetes and prediabetes according to fasting plasma glucose and HbA1c. *Diabetes Metab J*. 2013; 37: 349–57. DOI: 10.4093/dmj.2013.37.5.349 [PubMed: 24199164]
32. Rosella LC, Lebenbaum M, Fitzpatrick T, Zuk A, Booth GL. Prevalence of prediabetes and undiagnosed diabetes in Canada (2007–2011) according to fasting plasma glucose and HbA1c screening criteria. *Diabetes Care*. 2015; 38: 1299–305. [PubMed: 25852207]
33. Rannan-Eliya RP, Wijemunige N, Perera P, et al. Prevalence of diabetes and pre-diabetes in Sri Lanka: a new global hotspot-estimates from the Sri Lanka Health and Ageing Survey 2018/2019. *BMJ Open Diabetes Res Care*. 2023; 11 e003160 doi: 10.1136/bmjdr-2022-003160 [PubMed: 36796852]
34. Nazir A, Papita R, Anbalagan VP, Anjana RM, Deepa M, Mohan V. Prevalence of diabetes in Asian Indians based on glycosylated hemoglobin and fasting and 2-H post-load (75-g) plasma glucose (CURES-120). *Diabetes Technol Ther*. 2012; 14: 665–68. [PubMed: 22823754]
35. Pauli A, de Mestral C, Marques-Vidal P. Trends in diabetes prevalence, awareness, treatment, and control in French-speaking Switzerland. *Sci Rep*. 2024; 14 4839 doi: 10.1038/s41598-024-54856-6 [PubMed: 38418618]
36. Lilja M, Eliasson M, Eriksson M, Söderberg S. A rightward shift of the distribution of fasting and post-load glucose in northern Sweden between 1990 and 2009 and its predictors. Data from the Northern Sweden MONICA study. *Diabet Med*. 2013; 30: 1054–62. [PubMed: 23586854]
37. Chang HY, Hsu CC, Pan WH, et al. Gender differences in trends in diabetes prevalence from 1993 to 2008 in Taiwan. *Diabetes Res Clin Pract*. 2010; 90: 358–64. [PubMed: 20970872]
38. Heidemann C, Du Y, Paprott R, Haftenberger M, Rathmann W, Scheidt-Nave C. Temporal changes in the prevalence of diagnosed diabetes, undiagnosed diabetes and prediabetes: findings from the German Health Interview and Examination Surveys in 1997–1999 and 2008–2011. *Diabet Med*. 2016; 33: 1406–14. [PubMed: 26498983]
39. Magliano DJ, Chen L, Islam RM, et al. Trends in the incidence of diagnosed diabetes: a multicountry analysis of aggregate data from 22 million diagnoses in high-income and middle-income settings. *Lancet Diabetes Endocrinol*. 2021; 9: 203–11. DOI: 10.1016/S2213-8587(20)30402-2 [PubMed: 33636102]
40. Tuomilehto J. The emerging global epidemic of type 1 diabetes. *Curr Diab Rep*. 2013; 13: 795–804. [PubMed: 24072479]

41. Ley SH, Hamdy O, Mohan V, Hu FB. Prevention and management of type 2 diabetes: dietary components and nutritional strategies. *Lancet*. 2014; 383: 1999–2007. DOI: 10.1016/S0140-6736(14)60613-9 [PubMed: 24910231]
42. Chen M, Sun Q, Giovannucci E, et al. Dairy consumption and risk of type 2 diabetes: 3 cohorts of US adults and an updated meta-analysis. *BMC Med*. 2014; 12: 215. doi: 10.1186/s12916-014-0215-1 [PubMed: 25420418]
43. Hu Y, Ding M, Sampson L, et al. Intake of whole grain foods and risk of type 2 diabetes: results from three prospective cohort studies. *BMJ*. 2020; 370 m2206 doi: 10.1136/bmj.m2206 [PubMed: 32641435]
44. Li M, Fan Y, Zhang X, Hou W, Tang Z. Fruit and vegetable intake and risk of type 2 diabetes mellitus: meta-analysis of prospective cohort studies. *BMJ Open*. 2014; 4 e005497 doi: 10.1136/bmjopen-2014-005497 [PubMed: 25377009]
45. Imamura F, O'Connor L, Ye Z, et al. Consumption of sugar sweetened beverages, artificially sweetened beverages, and fruit juice and incidence of type 2 diabetes: systematic review, meta-analysis, and estimation of population attributable fraction. *BMJ*. 2015; 351 h3576 doi: 10.1136/bmj.h3576 [PubMed: 26199070]
46. Bhavadharini B, Mohan V, Dehghan M, et al. White rice intake and incident diabetes: a study of 132,373 participants in 21 countries. *Diabetes Care*. 2020; 43: 2643–50. DOI: 10.2337/dc19-2335 [PubMed: 32873587]
47. Mohan V, Radhika G, Sathya RM, Tamil SR, Ganesan A, Sudha V. Dietary carbohydrates, glycaemic load, food groups and newly detected type 2 diabetes among urban Asian Indian population in Chennai, India (Chennai Urban Rural Epidemiology Study 59). *Br J Nutr*. 2009; 102: 1498–506. [PubMed: 19586573]
48. Diabetes Prevention Program Research Group. Long-term effects of lifestyle intervention or metformin on diabetes development and microvascular complications over 15-year follow-up: the Diabetes Prevention Program Outcomes Study. *Lancet Diabetes Endocrinol*. 2015; 3: 866–75. DOI: 10.1016/S2213-8587(15)00291-0 [PubMed: 26377054]
49. Saaristo T, Moilanen L, Korpi-Hyövälti E, et al. Lifestyle intervention for prevention of type 2 diabetes in primary health care: one-year follow-up of the Finnish National Diabetes Prevention Program (FIN-D2D). *Diabetes Care*. 2010; 33: 2146–51. DOI: 10.2337/dc10-0410 [PubMed: 20664020]
50. Ramachandran A, Snehalatha C, Mary S, Mukesh B, Bhaskar AD, Vijay V. The Indian Diabetes Prevention Programme shows that lifestyle modification and metformin prevent type 2 diabetes in Asian Indian subjects with impaired glucose tolerance (IDPP-1). *Diabetologia*. 2006; 49: 289–97. [PubMed: 16391903]
51. Chakkalakal RJ, Galaviz KI, Thirunavukkarasu S, Shah MK, Narayan KMV. Test and treat for prediabetes: a review of the health effects of prediabetes and the role of screening and prevention. *Annu Rev Public Health*. 2024; 45: 151–67. [PubMed: 38109519]
52. Echouffo-Tcheugui JB, Perreault L, Ji L, Dagogo-Jack S. Diagnosis and management of prediabetes: a review. *JAMA*. 2023; 329: 1206–16. [PubMed: 37039787]
53. Haw JS, Galaviz KI, Straus AN, et al. Long-term sustainability of diabetes prevention approaches: a systematic review and meta-analysis of randomized clinical trials. *JAMA Intern Med*. 2017; 177: 1808–17. DOI: 10.1001/jamainternmed.2017.6040 [PubMed: 29114778]
54. Galaviz KI, Weber MB, Suvada K, et al. Interventions for reversing prediabetes: a systematic review and meta-analysis. *Am J Prev Med*. 2022; 62: 614–25. DOI: 10.1016/j.amepre.2021.10.020 [PubMed: 35151523]
55. Jonas DE, Crotty K, Yun JDY, et al. Screening for prediabetes and type 2 diabetes: updated evidence report and systematic review for the US Preventive Services Task Force. *JAMA*. 2021; 326: 744–60. [PubMed: 34427595]
56. Cole JB, Florez JC. Genetics of diabetes mellitus and diabetes complications. *Nat Rev Nephrol*. 2020; 16: 377–90. DOI: 10.1038/s41581-020-0278-5 [PubMed: 32398868]
57. Bhargava SK, Sachdev HS, Fall CH, et al. Relation of serial changes in childhood body-mass index to impaired glucose tolerance in young adulthood. *N Engl J Med*. 2004; 350: 865–75. DOI: 10.1056/NEJMoa035698 [PubMed: 14985484]

58. Gaede P, Vedel P, Larsen N, Jensen GV, Parving HH, Pedersen O. Multifactorial intervention and cardiovascular disease in patients with type 2 diabetes. *N Engl J Med.* 2003; 348: 383–93. [PubMed: 12556541]
59. Fox CS, Golden SH, Anderson C, et al. Update on prevention of cardiovascular disease in adults with type 2 diabetes mellitus in light of recent evidence: a scientific statement from the American Heart Association and the American Diabetes Association. *Circulation.* 2015; 132: 691–718. DOI: 10.1161/CIR.0000000000000230 [PubMed: 26246173]
60. Wu H, Yang A, Lau ESH, et al. 1-year weight change after diabetes diagnosis and long-term incidence and sustainability of remission of type 2 diabetes in real-world settings in Hong Kong: an observational cohort study. *PLoS Med.* 2024; 21 e1004327 doi: 10.1371/journal.pmed.1004327 [PubMed: 38261560]
61. Ali MK, Singh K, Kondal D, et al. Effect of a multicomponent quality improvement strategy on sustained achievement of diabetes care goals and macrovascular and microvascular complications in South Asia at 6.5 years follow-up: post hoc analyses of the CARRS randomized clinical trial. *PLoS Med.* 2024; 21 e1004335 doi: 10.1371/journal.pmed.1004335 [PubMed: 38829880]
62. Valabhji J, Gorton T, Barron E, et al. Early findings from the NHS Type 2 Diabetes Path to Remission Programme: a prospective evaluation of real-world implementation. *Lancet Diabetes Endocrinol.* 2024; 12: 653–63. [PubMed: 39116897]
63. Kruk ME, Nigenda G, Knaul FM. Redesigning primary care to tackle the global epidemic of noncommunicable disease. *Am J Public Health.* 2015; 105: 431–37. DOI: 10.2105/AJPH.2014.302392 [PubMed: 25602898]
64. Farzadfar F, Murray CJ, Gakidou E, et al. Effectiveness of diabetes and hypertension management by rural primary health-care workers (Behvarz workers) in Iran: a nationally representative observational study. *Lancet.* 2012; 379: 47–54. [PubMed: 22169105]
65. India Tuberculosis-Diabetes Study Group. Screening of patients with tuberculosis for diabetes mellitus in India. *Trop Med Int Health.* 2013; 18: 636–45. [PubMed: 23458555]
66. Lekoubou A, Awah P, Fezeu L, Sobngwi E, Kengne AP. Hypertension, diabetes mellitus and task shifting in their management in sub-Saharan Africa. *Int J Environ Res Public Health.* 2010; 7: 353–63. DOI: 10.3390/ijerph7020353 [PubMed: 20616978]
67. Willis A, Rivers P, Gray LJ, Davies M, Khunti K. The effectiveness of screening for diabetes and cardiovascular disease risk factors in a community pharmacy setting. *PLoS One.* 2014; 9 e91157 doi: 10.1371/journal.pone.0091157 [PubMed: 24690919]
68. Jindal D, Sharma H, Gupta Y, et al. Improving care for hypertension and diabetes in india by addition of clinical decision support system and task shifting in the national NCD program: I-TREC model of care. *BMC Health Serv Res.* 2022; 22: 688. doi: 10.1186/s12913-022-08025-y [PubMed: 35606762]
69. Toscano CM, Duncan BB, Mengue SS, et al. Initial impact and cost of a nationwide population screening campaign for diabetes in Brazil: a follow up study. *BMC Health Serv Res.* 2008; 8: 189. doi: 10.1186/1472-6963-8-189 [PubMed: 18808662]
70. Kivuyo S, Birungi J, Okebe J, et al. Integrated management of HIV, diabetes, and hypertension in sub-Saharan Africa (INTE-AFRICA): a pragmatic cluster-randomised, controlled trial. *Lancet.* 2023; 402: 1241–50. [PubMed: 37805215]
71. Bali V, Yermilov I, Koyama A, Legorreta AP. Secondary prevention of diabetes through workplace health screening. *Occup Med (Lond).* 2018; 68: 610–16. [PubMed: 30380118]
72. Finnish Diabetes Association Diabetes Centre. Development Programme for the Prevention and Care of Diabetes in Finland 2000–2010. Finnish Diabetes Association; Tampere: 2001. [https://www.diabetes.fi/files/200/Development\\_Programme\\_for\\_the\\_Prevention\\_and\\_Care\\_of\\_Diabetes\\_2000\\_2010\\_pdf\\_910\\_kB.pdf](https://www.diabetes.fi/files/200/Development_Programme_for_the_Prevention_and_Care_of_Diabetes_2000_2010_pdf_910_kB.pdf) [accessed Aug 19, 2024]
73. Ewen M, Joosse HJ, Beran D, Laing R. Insulin prices, availability and affordability in 13 low-income and middle-income countries. *BMJ Glob Health.* 2019; 4 e001410 doi: 10.1136/bmjgh-2019-001410 [PubMed: 31263585]
74. Shah S, Singh K, Ali MK, et al. Improving diabetes care: multi-component cardiovascular disease risk reduction strategies for people with diabetes in South Asia--the CARRS multi-center

translation trial. *Diabetes Res Clin Pract.* 2012; 98: 285–94. DOI: 10.1016/j.diabres.2012.09.023  
[PubMed: 23084280]

## Research in context

### Evidence before this study

We searched MEDLINE (via PubMed) for articles published from database inception up to Aug 14, 2024, with no language restrictions, using the following search terms: (“Diabetes Mellitus”[MAJR:NoExp] OR “Diabetes Mellitus, Type 2”[MAJR:NoExp] OR “Diabetes Mellitus, Type 1”[MAJR:NoExp] OR “Blood Glucose”[MAJR] OR “Glycated Hemoglobin”[MAJR]) AND (“Health Surveys”[mh] OR “Epidemiological Monitoring”[mh] OR “Cross-Sectional Studies”[mh] OR “Prevalence”[mh]) AND “Humans”[mh] NOT “patient\*”[Title] NOT Comment[ptyp] NOT Case Reports[ptyp]. Articles were screened to include measured data on blood glucose or glycated haemoglobin, collected from samples of national, subnational, or community populations aged 18 years and older.

Many studies reported diabetes prevalence and treatment for adults in a single country or a single region. Many of these found an increase in diabetes prevalence. However, studies in Spain, France, Switzerland, Germany, Sweden, Japan, and Taiwan found flat or decreasing trends in prevalence in one or both sexes. We found four studies that reported diabetes prevalence or treatment in multiple low-income and middle-income countries directly from surveys or other community-based samples. These studies did not report trends over time, nor did they account for differences in age groups included in surveys.

A few studies reported diabetes prevalence for multiple world regions or globally for different time periods, mostly before 2015. We found two global studies that reported diabetes prevalence beyond 2015. One study used population-based data that had measured a glycaemic biomarker such as FPG and HbA<sub>1c</sub> as well as data sources that had no measurement and relied only on self-reported diabetes diagnosis (eg, the Canadian Community Health Survey and European Health Interview Surveys) or registry data (eg, a diabetes registry in Russia). The self-reported data were adjusted to approximate total diabetes prevalence on the basis of the average diagnosis rate in the country, if available, or region where the data came from. The other global study used population-based data that had measured glycaemic biomarkers such as FPG and HbA<sub>1c</sub> as well as registry data (eg, New Zealand Virtual Diabetes Register and Australia National Diabetes Register); it did not make any adjustments to registry data to account for the underestimation of prevalence due to undiagnosed diabetes. These studies either reported diabetes prevalence on the basis of a single glycaemic marker (most commonly FPG), and hence did not include people with isolated elevated levels of other glycaemic markers such as HbA<sub>1c</sub>, or they did not standardise the definition of diabetes across studies. No study reported diabetes treatment coverage for all countries in the world.

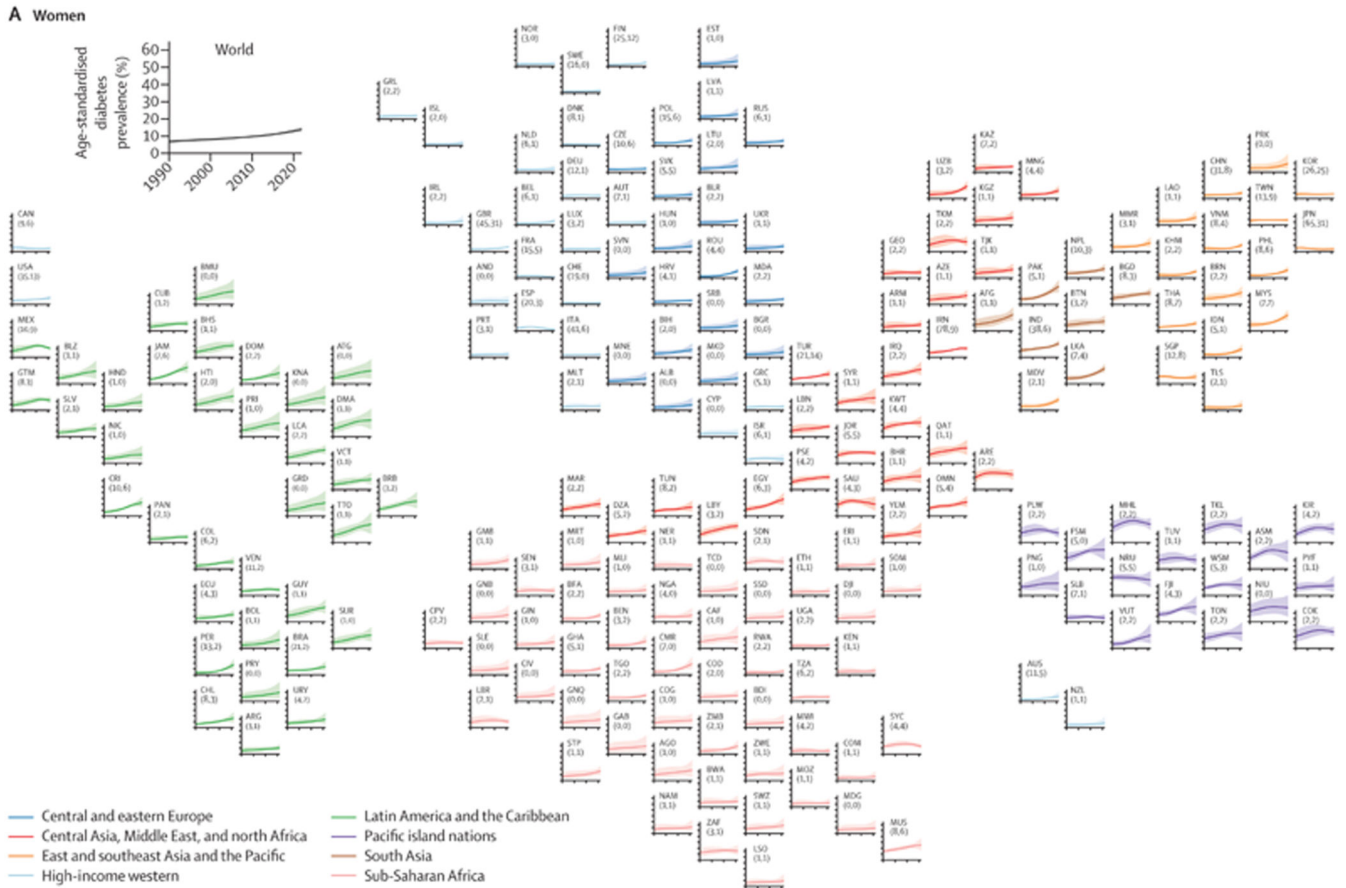
### Added value of this study

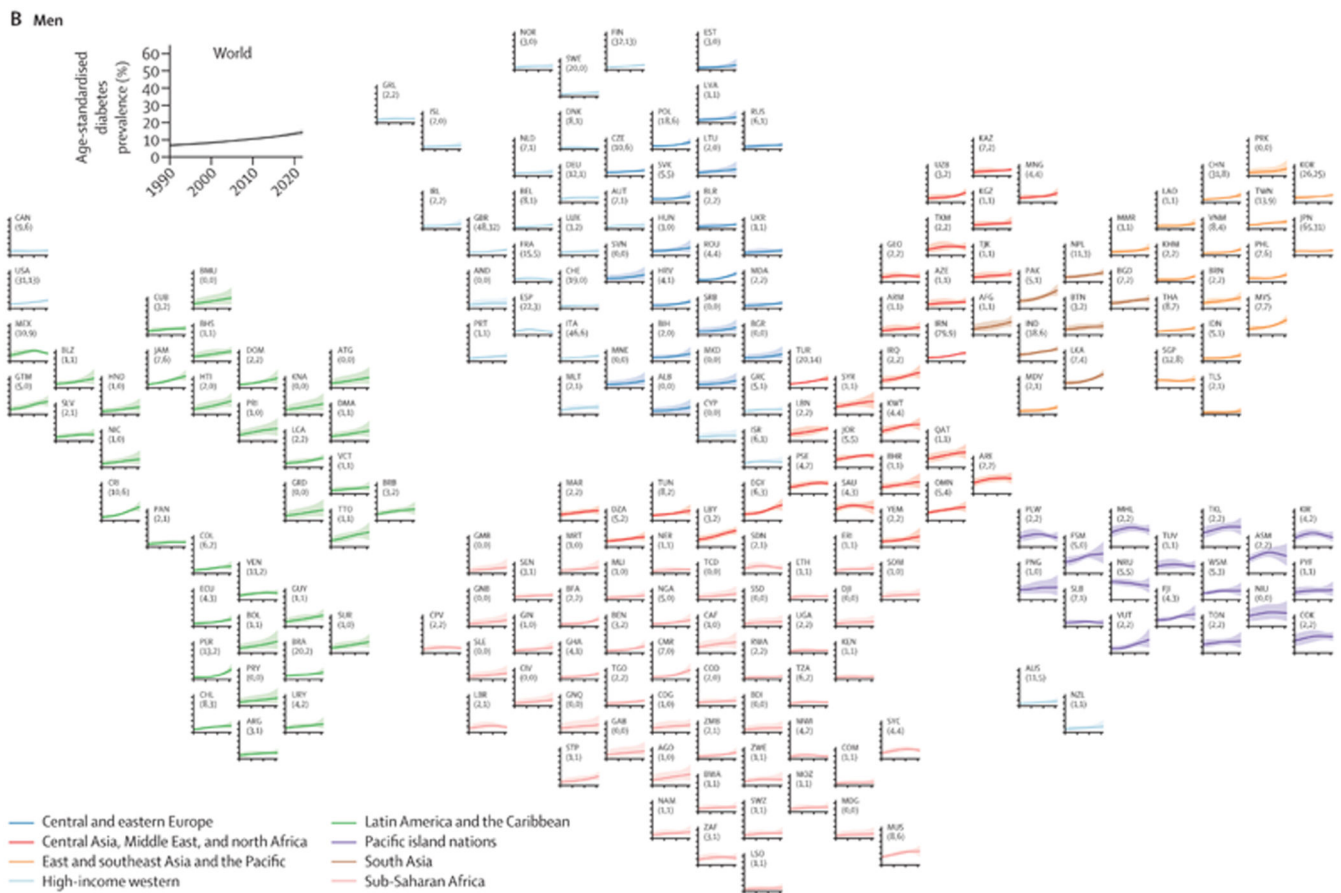
To our knowledge, this study is the first global analysis of trends in both diabetes prevalence and treatment coverage that covers all countries. We reanalysed and pooled hundreds of population-representative studies with measurements of glycaemic biomarkers and data on diabetes treatment. We used a diabetes definition that included

both FPG and HbA<sub>1c</sub>, thus closing a major gap between global health statistics and clinical practice and guidelines.

#### **Implications of all the available evidence**

Since 1990, the largest increase in diabetes prevalence has occurred in low-income and middle-income countries, whereas the improvements in treatment were largest in high-income and industrialised nations and some emerging economies, especially in Latin America. These trends have widened the global gap in diabetes prevalence and treatment, with an increasing share of people with diabetes, especially with untreated diabetes, living in low-income and middle-income countries.





**Figure 1. Age-standardised diabetes prevalence from 1990 to 2022 by country, for women and men aged 18 years or older**

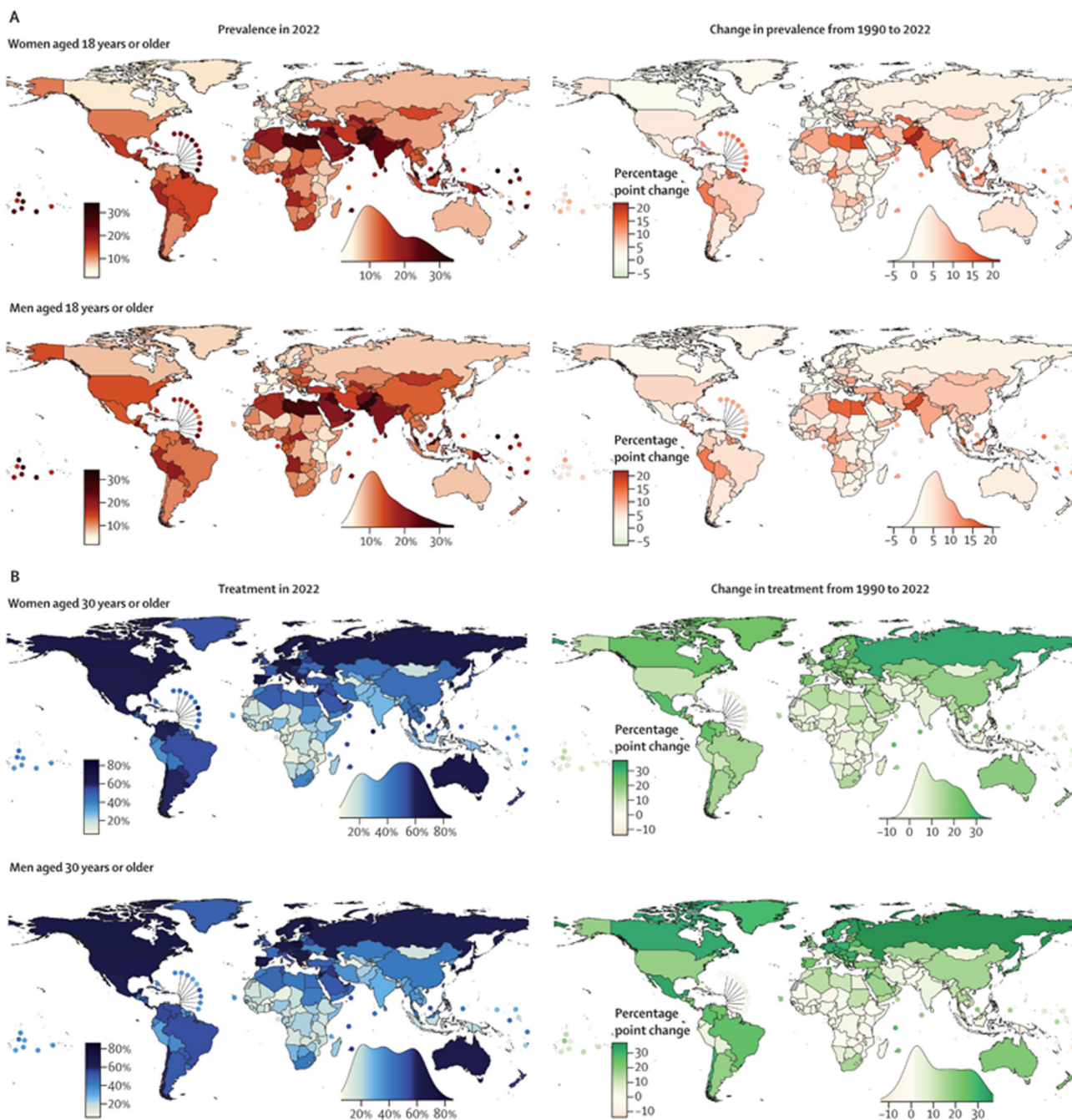
The shaded areas around the lines show the 95% credible intervals of the estimates.

Countries are labelled using their International Organization for Standardization 3166–

1 α-3 codes. The numbers in brackets after each country’s label show the total number of data sources and the number of nationally representative data sources, respectively. See the appendix (pp 90–91) for the results for both sexes combined.

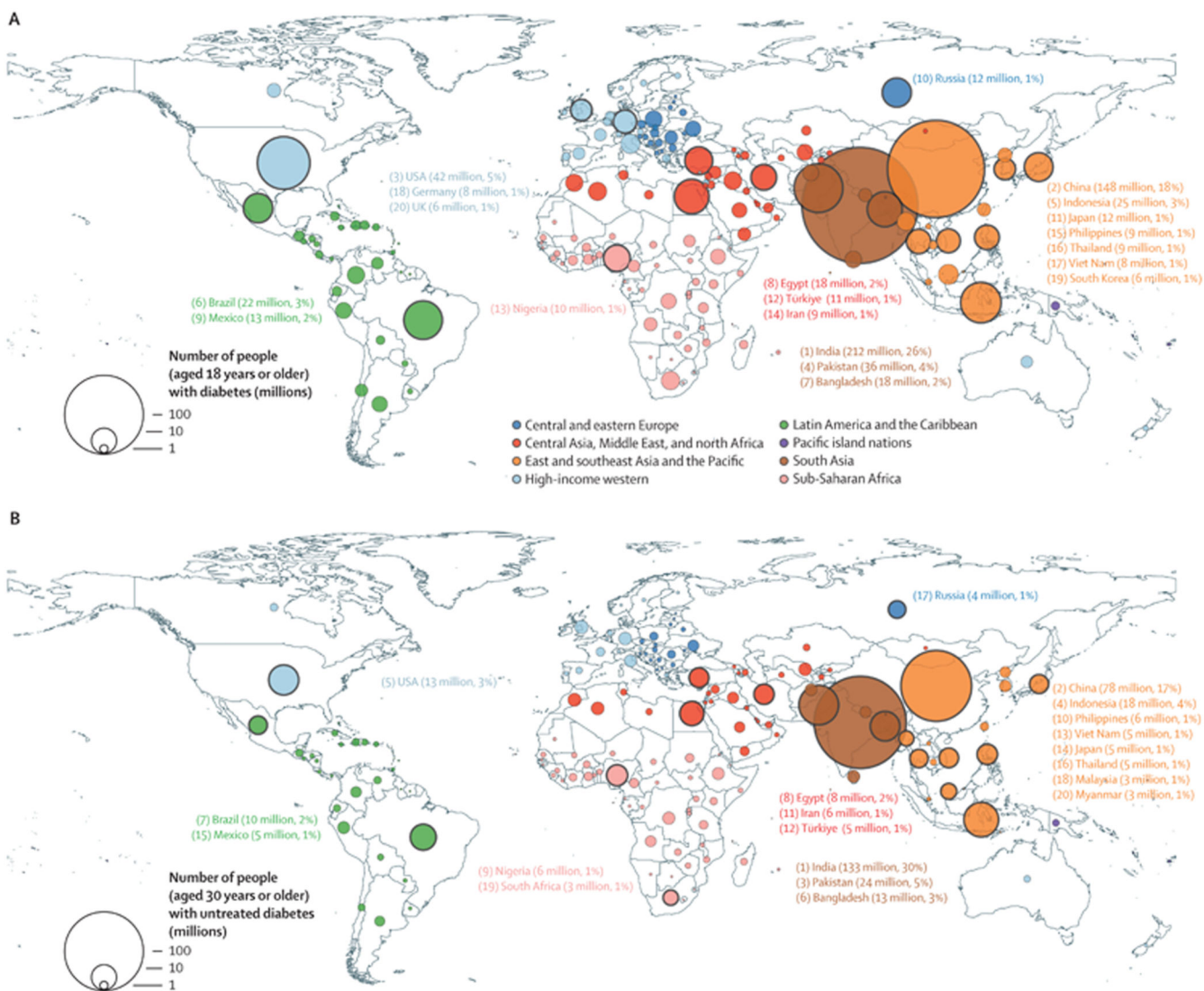
AFG=Afghanistan. AGO=Angola. ALB=Albania. AND=Andorra. ARE=United Arab Emirates. ARG=Argentina. ARM=Armenia. ASM=American Samoa. ATG=Antigua and Barbuda. AUS=Australia. AUT=Austria. AZE=Azerbaijan. BDI=Burundi. BEL=Belgium. BEN=Benin. BFA=Burkina Faso. BGD=Bangladesh. BGR=Bulgaria. BHR=Bahrain. BHS=The Bahamas. BIH=Bosnia and Herzegovina. BLR=Belarus. BLZ=Belize. BMU=Bermuda. BOL=Bolivia. BRA=Brazil. BRB=Barbados. BRN=Brunei. BTN=Bhutan. BWA=Botswana. CAF=Central African Republic. CAN=Canada. CHE=Switzerland. CHL=Chile. CHN=China. CIV=Côte d’Ivoire. CMR=Cameroon. COD=DR Congo. COG=Congo (Brazzaville). COK=Cook Islands. COL=Colombia. COM=Comoros. CPV=Cabo Verde. CRI=Costa Rica. CUB=Cuba. CYP=Cyprus. CZE=Czechia. DEU=Germany. DJI=Djibouti. DMA=Dominica. DNK=Denmark. DOM=Dominican Republic. DZA=Algeria. ECU=Ecuador. EGY=Egypt. ERI=Eritrea. ESP=Spain. EST=Estonia. ETH=Ethiopia. FIN=Finland. FJI=Fiji. FRA=France. FSM=Federated

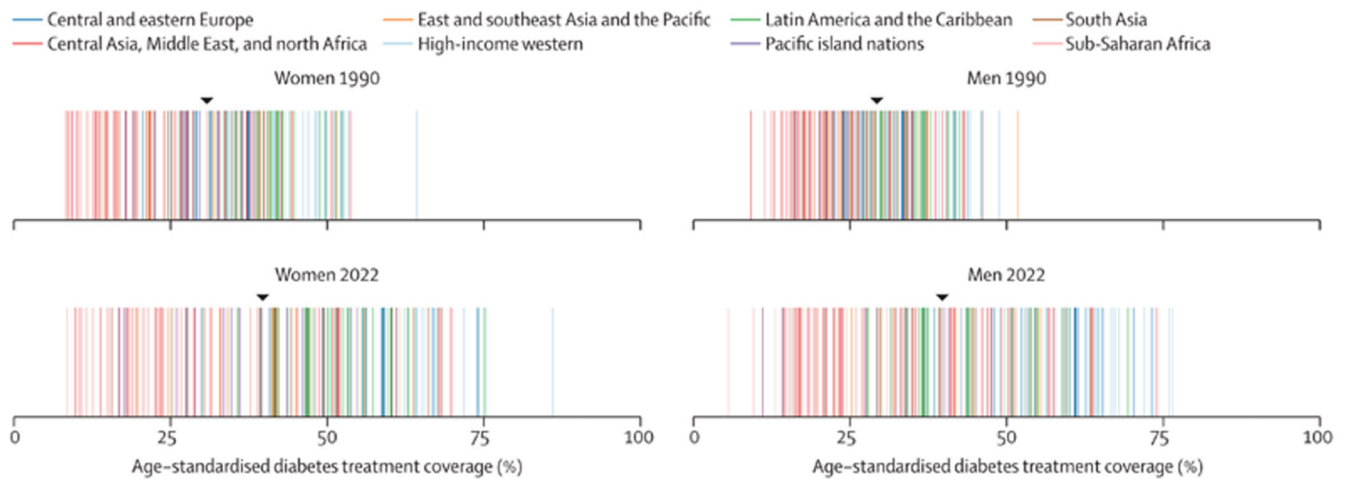
States of Micronesia. GAB=Gabon. GBR=UK. GEO=Georgia. GHA=Ghana. GIN=Guinea. GMB=The Gambia. GNB=Guinea-Bissau. GNQ=Equatorial Guinea. GRC=Greece. GRD=Grenada. GRL=Greenland. GTM=Guatemala. GUY=Guyana. HND=Honduras. HRV=Croatia. HTI=Haiti. HUN=Hungary. IDN=Indonesia. IND=India. IRL=Ireland. IRN=Iran. IRQ=Iraq. ISL=Iceland. ISR=Israel. ITA=Italy. JAM=Jamaica. JOR=Jordan. JPN=Japan. KAZ=Kazakhstan. KEN=Kenya. KGZ=Kyrgyzstan. KHM=Cambodia. KIR=Kiribati. KNA=Saint Kitts and Nevis. KOR=South Korea. KWT=Kuwait. LAO=Laos. LBN=Lebanon. LBR=Liberia. LBY=Libya. LCA=Saint Lucia. LKA=Sri Lanka. LSO=Lesotho. LTU=Lithuania. LUX=Luxembourg. LVA=Latvia. MAR=Morocco. MDA=Moldova. MDG=Madagascar. MDV=Maldives. MEX=Mexico. MHL=Marshall Islands. MKD=North Macedonia. MLI=Mali. MLT=Malta. MMR=Myanmar. MNE=Montenegro. MNG=Mongolia. MOZ=Mozambique. MRT=Mauritania. MUS=Mauritius. MWI=Malawi. MYS=Malaysia. NAM=Namibia. NER=Niger. NGA=Nigeria. NIC=Nicaragua. NIU=Niue. NLD=Netherlands. NOR=Norway. NPL=Nepal. NRU=Nauru. NZL=New Zealand. OMN=Oman. PAK=Pakistan. PAN=Panama. PER=Peru. PHL=Philippines. PLW=Palau. PNG=Papua New Guinea. POL=Poland. PRI=Puerto Rico. PRK=North Korea. PRT=Portugal. PRY=Paraguay. PSE=Palestine. PYF=French Polynesia. QAT=Qatar. ROU=Romania. RUS=Russia. RWA=Rwanda. SAU=Saudi Arabia. SDN=Sudan. SEN=Senegal. SGP=Singapore. SLB=Solomon Islands. SLE=Sierra Leone. SLV=El Salvador. SOM=Somalia. SRB=Serbia. SSD=South Sudan. STP=São Tomé and Príncipe. SUR=Suriname. SVK=Slovakia. SVN=Slovenia. SWE=Sweden. SWZ=Eswatini. SYC=Seychelles. SYR=Syria. TCD=Chad. TGO=Togo. THA=Thailand. TJK=Tajikistan. TKL=Tokelau. TKM=Turkmenistan. TLS=Timor-Leste. TON=Tonga. TTO=Trinidad and Tobago. TUN=Tunisia. TUR=Türkiye. TUV=Tuvalu. TWN=Taiwan. TZA=Tanzania. UGA=Uganda. UKR=Ukraine. URY=Uruguay. USA=USA. UZB=Uzbekistan. VCT=Saint Vincent and the Grenadines. VEN=Venezuela. VNM=Viet Nam. VUT=Vanuatu. WSM=Samoa. YEM=Yemen. ZAF=South Africa. ZMB=Zambia. ZWE=Zimbabwe.



**Figure 2. Age-standardised diabetes prevalence and treatment coverage in 2022 and change from 1990 to 2022**

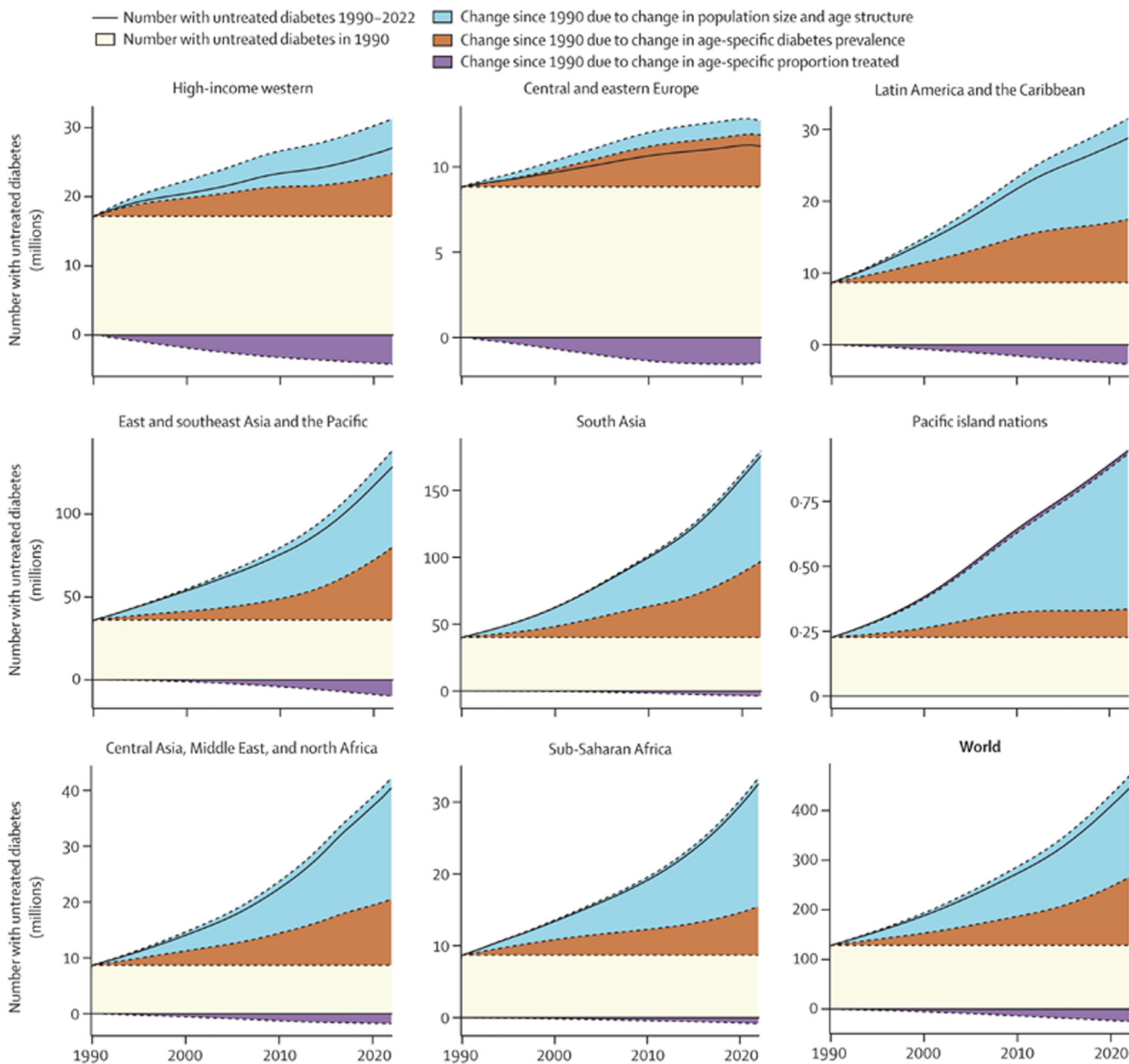
(A) Age-standardised diabetes prevalence in people aged 18 years or older. (B) Age-standardised treatment coverage in people aged 30 years or older. The density plot alongside each map shows the smoothed distribution of estimates across countries. The appendix (pp 78–81) shows the posterior probability of an estimated increase or decrease being a true increase or decrease. The appendix (pp 92–93) also shows the results for both sexes combined.





**Figure 4. Age-standardised treatment coverage for women and men aged 30 years or older in 1990 and 2022**

Each line represents a country, with countries coloured by the super-region in which they fall. The black triangle shows the age-standardised treatment coverage for the world. The appendix (p 69) shows the countries in each super-region. The appendix (pp 94–95) also shows the results for both sexes combined.



**Figure 5. Contributions of population growth and ageing, rise in diabetes prevalence, and improvement in treatment coverage to the change in the number of people with untreated diabetes from 1990 to 2022**

The sum of all sections in each graph is the total number of people with untreated diabetes over time, also shown by the solid black line. The area above the solid black line and top of stacked sections, where it is present, equals the contribution of improvement in treatment (ie, the purple section) towards reducing the number of people with untreated diabetes—namely, the top of the stacked sections shows how many people would have had untreated diabetes had treatment coverage not improved. The appendix (p 69) describes the countries in each super-region.

**Table**  
**Proportion of people with untreated diabetes who had not received a diagnosis, using data from studies conducted in 2005–22**

	Number of studies	Median year of studies (range)	Proportion of people with untreated diabetes who were undiagnosed	
			Women	Men
Central and eastern Europe	21	2014 (2008–21)	84.4%	86.0%
Central Asia, the Middle East, and north Africa	62	2013 (2005–22)	89.1%	89.9%
East and southeast Asia and the Pacific	54	2014 (2005–22)	90.4%	90.3%
High-income western	92	2012 (2005–21)	84.0%	84.5%
Latin America and the Caribbean	53	2014 (2005–22)	88.8%	88.5%
Pacific island nations	22	2011 (2005–22)	87.3%	86.3%
South Asia	27	2015 (2006–21)	97.0%	95.1%
Sub-Saharan Africa	50	2014 (2007–22)	94.2%	94.2%

Data from 2005–22 were used because there were more data available in this time period and the data were more recent. There is no credible interval for the proportion of people with untreated diabetes who were undiagnosed, because these numbers were obtained using a weighted average across studies as stated in the methods. The countries in each super-region are described in the appendix (p 69).