

# Influenza season 2016/17 Portugal

**Ana Paula Rodrigues, Raquel Guiomar, Pedro Pechirra, Susana Silva, Baltazar Nunes**

National Institute of Health Doutor Ricardo Jorge, Lisbon, Portugal

ECDC Annual Influenza Meeting  
Stockholm, Sweden  
20-22 June, 2017



# Influenza-like illness incidence rate

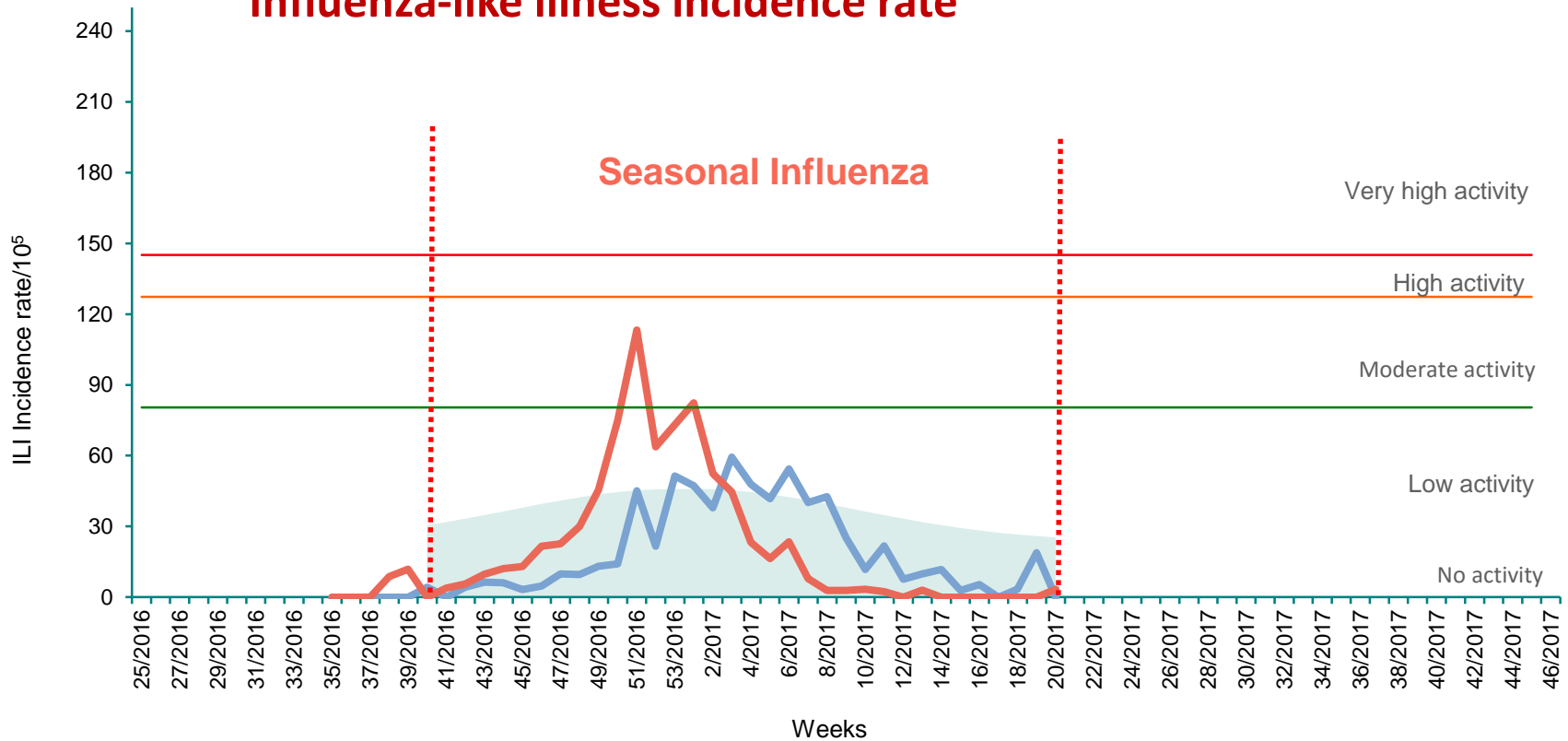


Figure 1. Portugal, weekly influenza-like illness incidence rate (/10<sup>5</sup>) during 2015/16 (—) and 2016/17 (—) seasons (sentinel surveillance)

## Early season

Week 49/2016 to week 2/2017 (6 weeks)

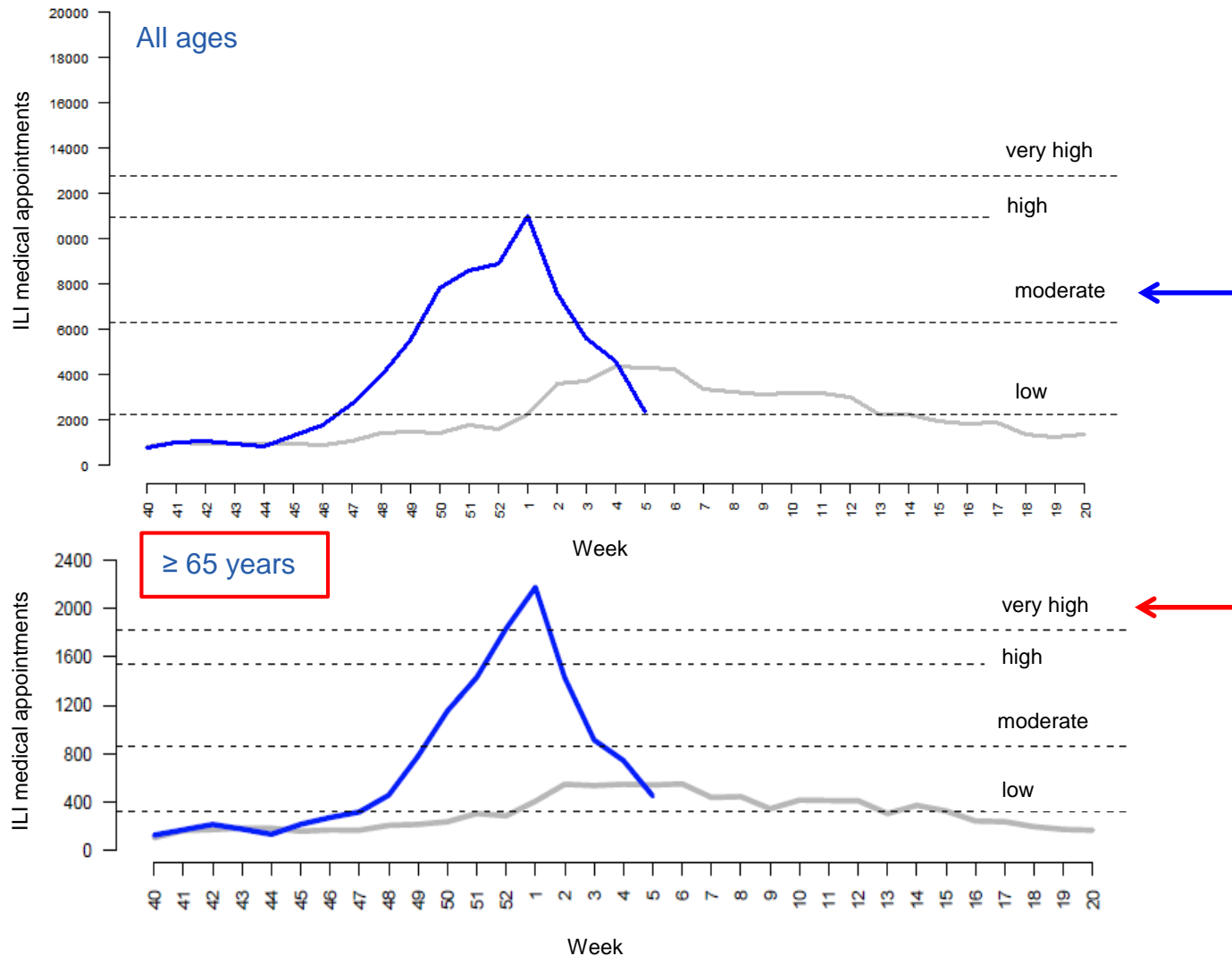
A(H3) dominance

## Moderate intensity

Peaked at week 1/2017 (82,4ILI cases /10<sup>5</sup>)

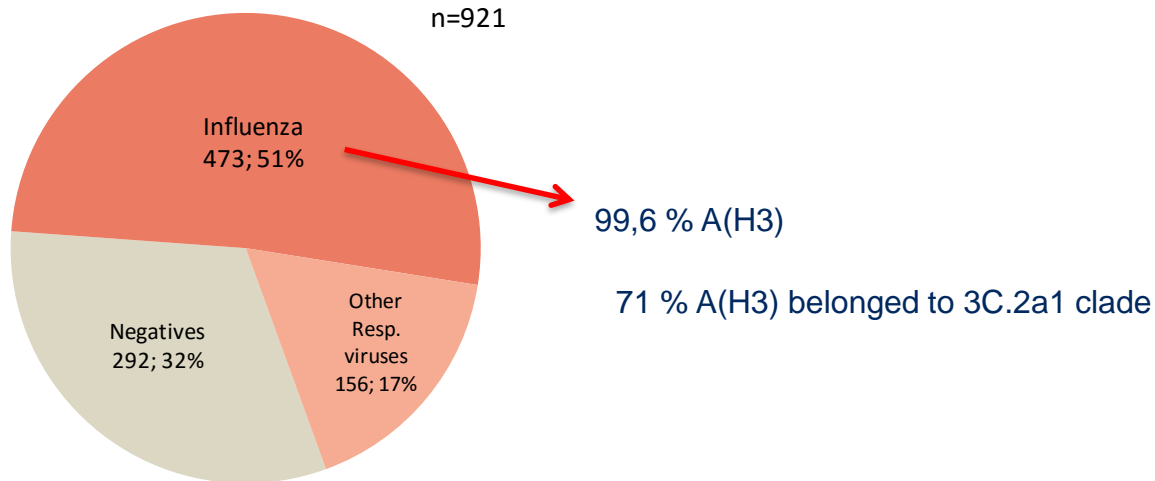
Higher incidence above 65 years (ILI medical appointments at primary health care)

# Influenza-like illness: medical appointments at primary health care



**Figure 2.** Portugal, weekly ILI medical appointments registered on primary health care during 2015/16 (—) and 2016/17 (—) seasons, all ages and 65 years and more 3

## Laboratorial surveillance



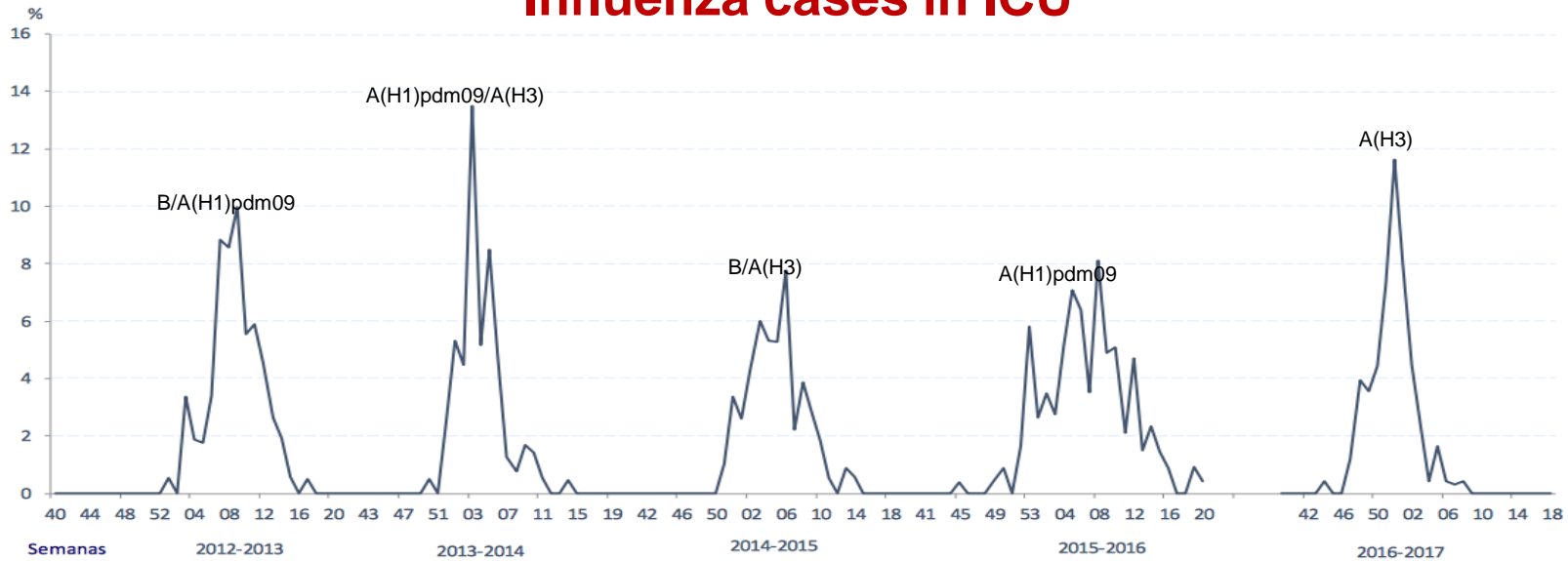
**Figure 3.** Portugal, ILI cases positive to Influenza and other respiratory viruses

**Table 1.** Portugal, genetic characterization of Influenza viruses, season 2016/17

Influenza	Phylogenetic group	Nr. Viruses
<b>A(H1)pdm09</b>	A/South Africa/3626/2013 (6B)	0
	A/New York/61/2015 (6B.1)	1
<b>A(H3)</b>	A/Hong Kong/4801/2014 ( <b>3C.2a</b> )	67
	A/Bolzano/7/2016 ( <b>3C.2a1</b> )	171
	A/Switzerland/9715293/2013 ( <b>3C.3a</b> )	1
<b>B/Yamagata</b>	B/Massachusetts/2/2012 (2)	0
	B/Phuket/3073/2013 (3)	1
<b>B/Victoria</b>	B/Brisbane/60/2008 (1A)	1
	B/Hong Kong/514/2009 (1B)	0
<b>Total</b>		<b>242</b>



## Influenza cases in ICU

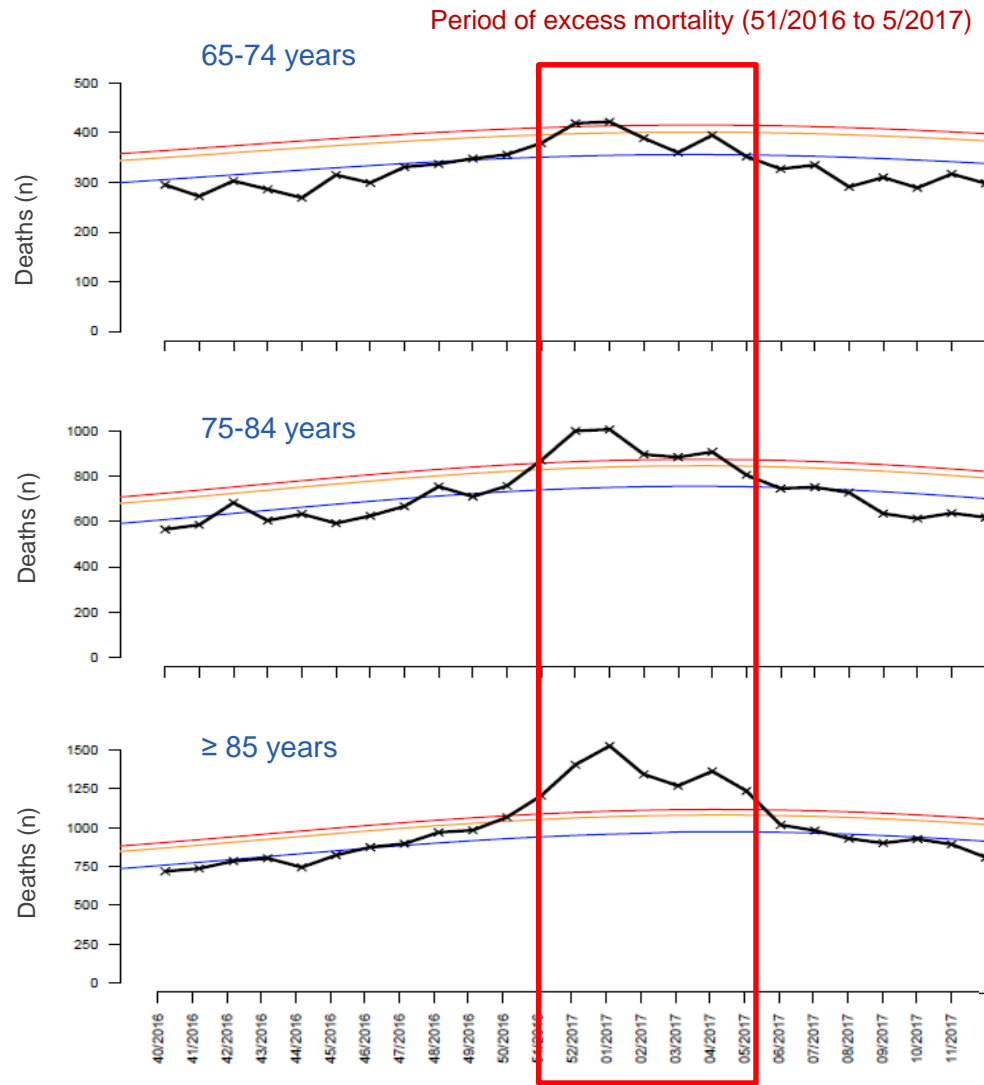


**Figure 5.** Portugal, weekly proportion of ICU admissions due to Influenza, 2012/13 until 2016/17 (sentinel surveillance)

**Table 2.** Portugal, age group distribution and intrahospital deaths of Influenza cases admitted in ICU each season (sentinel surveillance)

	2012/13	2013/14	2014/15	2015/16	2016/17*
0 - 44 years (%)	18,9	25,0	17,2	22,8	
45- 64 years (%)	<b>51,6</b>	<b>50,0</b>	26,9	<b>49,7</b>	
≥ 65 years (%)	29,5	25,0	<b>55,9</b>	27,4	<b>75,2</b>
Death during hospitalization (%)	<b>29,5</b>	12,1	23,7	<b>29,3</b>	<b>12,6 %</b> (underestimated)

\*provisional data



**All cause mortality above expected between week 51/2016 and week 5/2017**

- $\geq 65$  years (specially  $\geq 75$  years)
- similar to previous seasons with AH3 dominance or co-dominance

**Figure 6.** Portugal, weekly all cause mortality (—) in 2016/17 season. (—) expected all cause mortality; (—) upper limit of the 95 % confidence interval; (—) upper limit of the 99 % confidence interval

# To note:

In Portugal, Influenza epidemic had **moderate intensity** but:

- **Elderly people** were most affected;
- High positive rate **A(H3)**.

## High impact on all cause mortality

- Besides severity indicators (ICU admissions and intrahospital deaths) were moderate;
- **Elderly people** were most affected



Thank you for your attention!